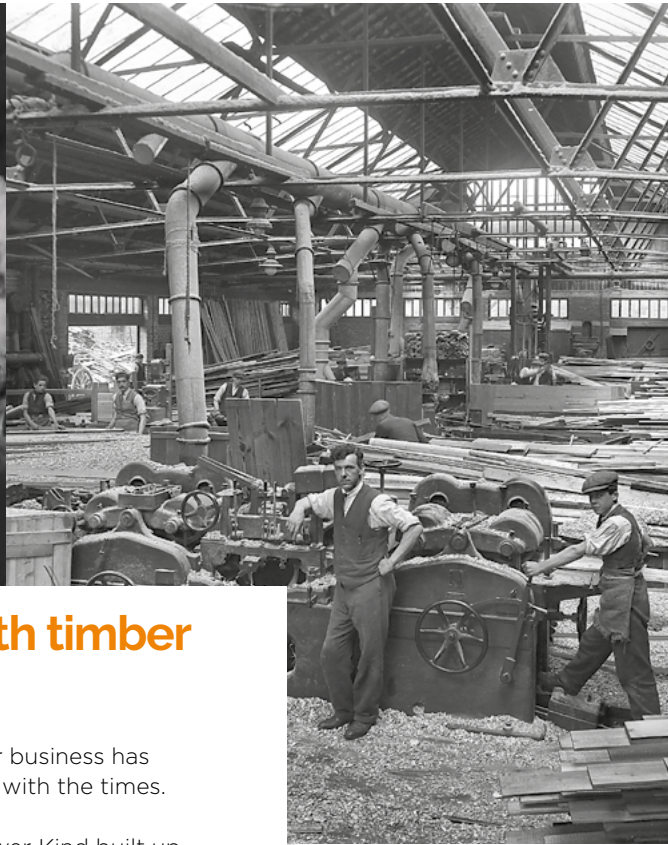




DOOR
COLLECTION
2024



Working with timber since 1870

For over 150 years, our business has diversified and moved with the times.

Our founder John Blower Kind built up a successful timber merchant and box manufacturing business which continued for many years. Timber pallet manufacturing was added to the mix and in 1983 we started selling doors. We're proud to say that innovation has kept our business strong, and as you browse through our latest door designs, we hope you will be inspired.

Like to know more? Visit jbkind.com/about/history



Contents

What's New in 2024	4-5
Internal Doors	6-104
FD30 Glazing Service	105
Door Handle Packs	106-109
Pocket Door Systems	110-113
Our Services	
Bespoke Options	115
Pas 24 Security Doorsets	116-117
Choosing Your Doors	
Responsible Suppliers	119
Things to Consider	120-121
Where to Buy	121
Come and See Our Doors	122
Get Inspired	123
Essential Door Care & Maintenance Advice	124
Door Visualiser	125

Colours depicted are representative only and are reproduced as accurately as the printing process will allow. We reserve the right to make alterations or modify specifications without notice. Errors and omissions excepted.

What's New in 2024

Contemporary fluted door design – the ARIA



Taking inspiration from the current trend for fluted wall panels and furnishings, the Aria's elegant design is perfect for the modern home. Available in black, grey and oak laminate (see pages 8-13), as well as white primed (see pages 74-75), there is a colour finish to suit every interior.



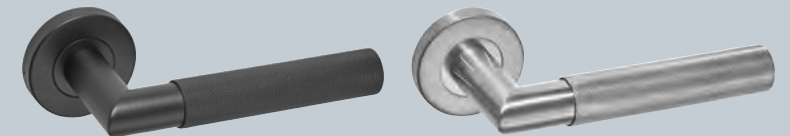
Thames White

Our top selling Thames Oak door now has a white primed equivalent that has all the same benefits. More robust and sturdier than similar alternatives without an impact on price (see pages 72-73).



Arlington Handle Packs

See our extended handle pack range which includes the beautiful, knurled finish of the Arlington (see pages 106-109).





LAMINATES

Contemporary elegance,
Laminate doors offer
a consistent, durable
finish in a selection of
on-trend colours.



Aria Black

Make a statement with a pocket door system
see page 110

Finish:
Black laminate with a subtle stippled texture and black painted grooves

Style:
Fluted door design

Glazing:
Clear flat safety glass with raised beading

Construction:
Semi-solid core construction

Other:
🔥 FD30 Fire doors
All fire doors are solid core construction

If trimming is required the door edges will need retouching. See website for colour match information.



NEW Aria Black

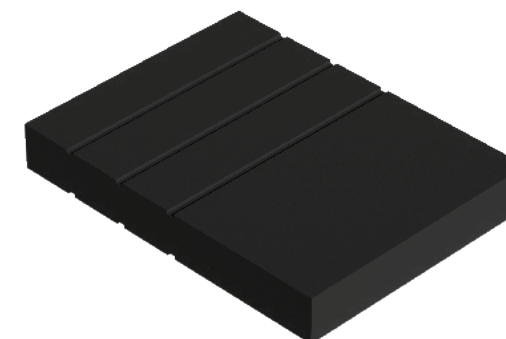


NEW Aria Black Glazed



Aria Black Glazed

Add the finishing touch...
see page 106



FINISHED		
Size (mm)		Code
1981 610 35		BARI20
1981 686 35		BARI23
1981 762 35		BARI26
1981 838 35		BARI29
1981 610 44		BARI20FD30 🔥
1981 686 44		BARI23FD30 🔥
1981 762 44		BARI26FD30 🔥
1981 838 44		BARI29FD30 🔥



FINISHED		
Size (mm)		Code
1981 610 35		BARI20G
1981 686 35		BARI23G
1981 762 35		BARI26G
1981 838 35		BARI29G

Aria is also available in Oak, Grey and White, see pages 11, 13 & 75.



Vi View in our Door Visualiser



Aria Oak

Make a statement with a pocket door system
see page 110

Finish:
Oak wood grain effect laminate with black painted grooves

Style:
Fluted door design

Glazing:
Clear flat safety glass with raised beading

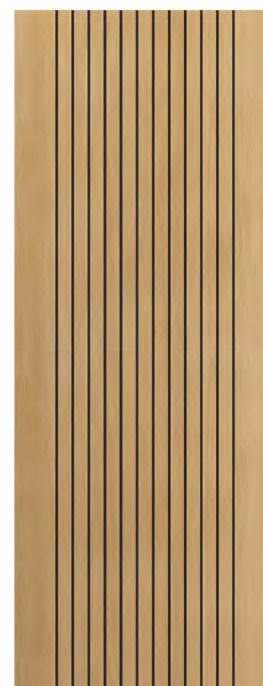
Construction:
Semi-solid core construction

Other:
🔥 FD30 Fire doors
All fire doors are solid core construction
If trimming is required the door edges will need retouching. See website for colour match information.



Aria Oak Glazed

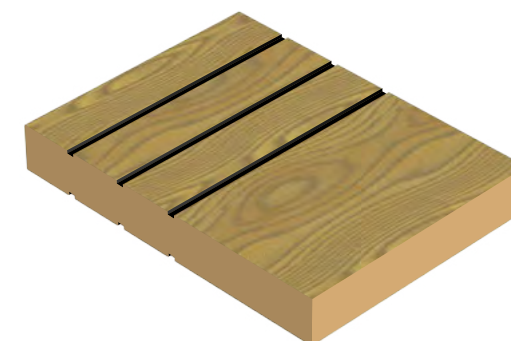
NEW Aria Oak



NEW Aria Oak Glazed



Add the finishing touch...
see page 106



FINISHED			
Size (mm)		Code	
1981 610 35		OARI20	
1981 686 35		OARI23	
1981 762 35		OARI26	
1981 838 35		OARI29	
1981 610 44		OARI20FD30	🔥
1981 686 44		OARI23FD30	🔥
1981 762 44		OARI26FD30	🔥
1981 838 44		OARI29FD30	🔥



FINISHED			
Size (mm)		Code	
1981 610 35		OARI20G	
1981 686 35		OARI23G	
1981 762 35		OARI26G	
1981 838 35		OARI29G	

Aria is also available in Black, Grey and White, see pages 9, 13 & 75.



Vi View in our Door Visualiser



Finish:
Light grey wood grain effect laminate with black painted grooves

Style:
Fluted door design

Glazing:
Clear flat safety glass with raised beading

Construction:
Semi-solid core construction

Other:
 🔥 FD30 Fire doors
 All fire doors are solid core construction

If trimming is required the door edges will need retouching. See website for colour match information.



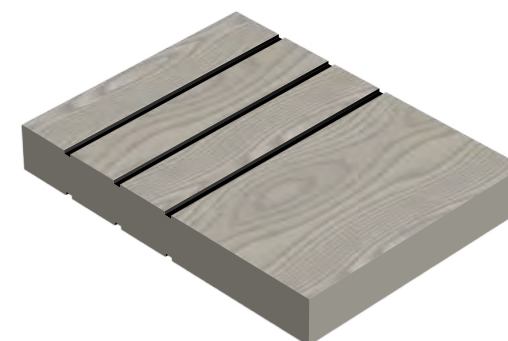
NEW Aria Grey



NEW Aria Grey Glazed



Add the finishing touch...
see page 106



Make a statement with a pocket door system
see page 110



FINISHED			
Size (mm)		Code	
1981 610 35		GARI20	
1981 686 35		GARI23	
1981 762 35		GARI26	
1981 838 35		GARI29	
1981 610 44		GARI20FD30	🔥
1981 686 44		GARI23FD30	🔥
1981 762 44		GARI26FD30	🔥
1981 838 44		GARI29FD30	🔥



FINISHED			
Size (mm)		Code	
1981 610 35		GARI20G	
1981 686 35		GARI23G	
1981 762 35		GARI26G	
1981 838 35		GARI29G	

Aria is also available in Black, Oak and White, see pages 9, 11 & 75.



Vi View in our Door Visualiser

Aria Grey



Tigris Light Grey

Make a statement with a pocket door system see page 110

Finish:
Finished laminate with light grey coloured wood effect

Style:
5 ladder style panels with light grey coloured grooves

Glazing:
Clear flat safety glass with raised beading.
Full Glazed: horizontal etched lines

Construction:
Semi-solid core construction

Other:
🔥 FD30 Fire doors
All fire doors are solid core construction
If trimming is required the door edges will need retouching. See website for colour match information.



Tigris Light Grey Full Glazed

Tigris Light Grey



Tigris Light Grey Slim Glazed



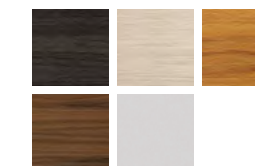
NEW Tigris Light Grey Full Glazed



Add the finishing touch... see page 106



Tigris is also available in Dark Grey, Ivory, Oak, Walnut and White, see pages 17, 37, 63 & 77.



FINISHED	
Size (mm)	Code
1981 610 35	LAVTIG20
1981 686 35	LAVTIG23
1981 762 35	LAVTIG26
1981 838 35	LAVTIG29
1981 610 44	LAVTIG20FD30🔥
1981 686 44	LAVTIG23FD30🔥
1981 762 44	LAVTIG26FD30🔥
1981 838 44	LAVTIG29FD30🔥



FINISHED	
Size (mm)	Code
1981 686 35	LAVTIG23G
1981 762 35	LAVTIG26G
1981 838 35	LAVTIG29G

Glazed fire doors are available to order.



FINISHED	
Size (mm)	Code
1981 610 35	LAVMED20G
1981 686 35	LAVMED23G
1981 762 35	LAVMED26G
1981 838 35	LAVMED29G

Glazed fire doors are available to order.



Make a statement with a pocket door system see page 110

Tigris Dark Grey

Finish:
Finished laminate with dark grey and ivory coloured wood effect

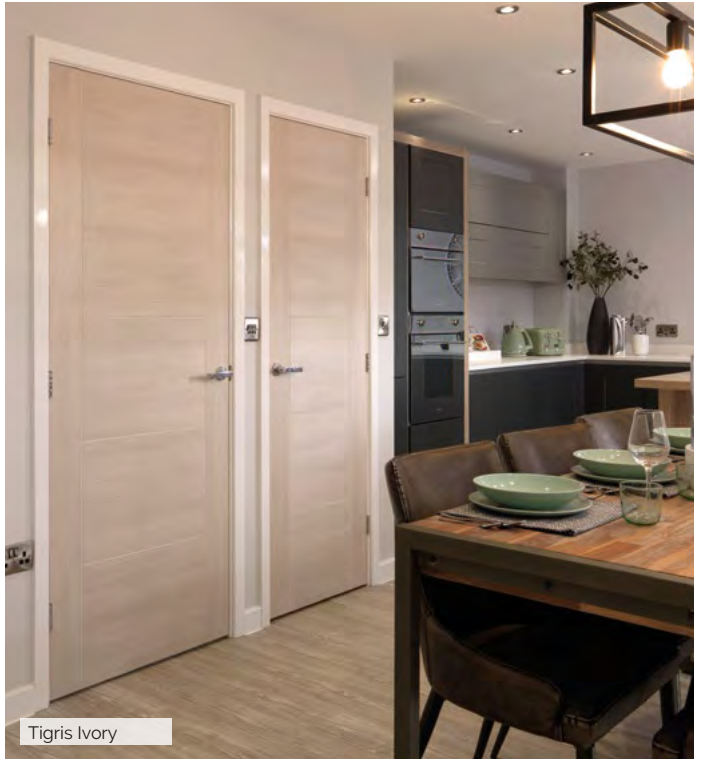
Style:
5 ladder style panels with matching coloured grooves

Glazing:
Clear flat safety glass with raised beading

Construction:
Semi-solid core construction

Other:
🔥 FD30 Fire doors
All fire doors are solid core construction

If trimming is required the door edges will need retouching. See website for colour match information.



Tigris Ivory

Tigris Dark Grey



Tigris Dark Grey Glazed



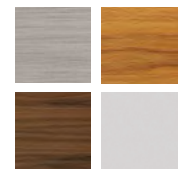
Tigris Ivory



Tigris Ivory Glazed



Tigris is also available in Light Grey, Oak, Walnut, and White, see pages 15, 37, 63 & 77.



FINISHED	
Size (mm)	Code
1981 610 35	CINTIG20
1981 686 35	CINTIG23
1981 762 35	CINTIG26
1981 838 35	CINTIG29
1981 610 44	CINTIG20FD30 🔥
1981 686 44	CINTIG23FD30 🔥
1981 762 44	CINTIG26FD30 🔥
1981 838 44	CINTIG29FD30 🔥

FINISHED	
Size (mm)	Code
1981 686 35	CINTIG23G
1981 762 35	CINTIG26G
1981 838 35	CINTIG29G

Glazed fire doors are available to order.

FINISHED	
Size (mm)	Code
1981 610 35	IVOTIG20
1981 686 35	IVOTIG23
1981 762 35	IVOTIG26
1981 838 35	IVOTIG29
1981 610 44	IVOTIG20FD30 🔥
1981 686 44	IVOTIG23FD30 🔥
1981 762 44	IVOTIG26FD30 🔥
1981 838 44	IVOTIG29FD30 🔥

FINISHED	
Size (mm)	Code
1981 686 35	IVOTIG23G
1981 762 35	IVOTIG26G
1981 838 35	IVOTIG29G

Glazed fire doors are available to order.

View in our Door Visualiser



Colorado Grey

Make a statement with a pocket door system
see page 110

Finish:
Finished laminate with grey (Colorado Grey) and oak (Hudson Oak) coloured wood effect

Style:
Grooved cottage style central panel

Glazing:
Clear flat safety glass with raised beading.
Colorado Grey: vertical etched lines

Construction:
Semi-solid core construction

Other:
🔥 FD30 Fire doors
All fire doors are solid core construction
If trimming is required the door edges will need retouching. See website for colour match information.



Hudson Oak

Colorado Grey



Add the finishing touch...
see page 106



Colorado Grey Glazed



Hudson Oak



Hudson Oak Glazed



FINISHED	
Size (mm)	Code
1981 610 35	LCOLO20
1981 686 35	LCOLO23
1981 762 35	LCOLO26
1981 838 35	LCOLO29
1981 610 44	LCOLO20FD30
1981 686 44	LCOLO23FD30
1981 762 44	LCOLO26FD30
1981 838 44	LCOLO29FD30



FINISHED	
Size (mm)	Code
1981 686 35	LCOLO23G
1981 762 35	LCOLO26G
1981 838 35	LCOLO29G

FINISHED	
Size (mm)	Code
1981 610 44	LHUD20FD30
1981 686 44	LHUD23FD30
1981 762 44	LHUD26FD30
1981 838 44	LHUD29FD30
2040 626 44	LHUD626FD30
2040 726 44	LHUD726FD30
2040 826 44	LHUD826FD30
2040 926 44	LHUD926FD30

FINISHED	
Size (mm)	Code
1981 686 35	LHUDG23
1981 762 35	LHUDG26
1981 838 35	LHUDG29
2040 626 40	LHUDG626
2040 726 40	LHUDG726
2040 826 40	LHUDG826

VI View in our Door Visualiser



Make a statement with a pocket door system see page 110

Alabama Light Grey



Alabama Dark Grey

Finish:
Finished laminate with either a light smoky grey or dark grey coloured wood effect

Style:
Central panel is slightly recessed

Glazing:
Clear flat safety glass with raised beading

Construction:
Semi-solid core construction

Other:
🔥 FD30 Fire doors
All fire doors are solid core construction
If trimming is required the door edges will need retouching. See website for colour match information.



View in our Door Visualiser

Alabama Light Grey



Alabama Light Grey Glazed



FINISHED		
Size (mm)		Code
1981 610 35		LALAFUM20
1981 686 35		LALAFUM23
1981 762 35		LALAFUM26
1981 838 35		LALAFUM29
1981 686 44		LALAFUM23FD30 🔥
1981 762 44		LALAFUM26FD30 🔥
1981 838 44		LALAFUM29FD30 🔥

Alabama Dark Grey



Alabama Dark Grey Glazed



FINISHED		
Size (mm)		Code
1981 610 35		LALACIN20
1981 686 35		LALACIN23
1981 762 35		LALACIN26
1981 838 35		LALACIN29
1981 686 44		LALACIN23FD30 🔥
1981 762 44		LALACIN26FD30 🔥
1981 838 44		LALACIN29FD30 🔥

Add the finishing touch... see page 106





URBAN INDUSTRIAL

Combining the cool appeal of the urban landscape with the smooth, stylish lines of modern living.



Finish:
Finished graphite grey laminate

Style:
3 ladder style panels

Glazing:
Clear flat safety glass
All glazed doors are constructed with individual panes for added stability
No risk of drilling into glass on glazed door

Construction:
Solid framing and lock blocks
Robust 9mm solid panels

Other:
10mm trimming allowance on bottom rail
Suitable for regular door ironmongery
Rebated door pairs can be ordered from stock with a short lead time



FINISHED			
Size (mm)		Code	
1981	610	35	UGRCOS20
1981	686	35	UGRCOS23
1981	762	35	UGRCOS26
1981	838	35	UGRCOS29

Add the finishing touch...
see page 106 

Cosmo Grey



Cosmo Grey
Clear Glass



FINISHED			
Size (mm)		Code	
1981	610	35	UGRCOS20G
1981	686	35	UGRCOS23G
1981	762	35	UGRCOS26G
1981	838	35	UGRCOS29G

 View in our Door Visualiser





Civic Black Clear Glass

Make a statement with a pocket door system see page 110

Finish:
Black or white painted finish

Style:
6 industrial style panels

Glazing:
Clear flat safety glass
All glazed doors are constructed with individual panes for added stability
No risk of drilling into glass on glazed doors

Construction:
Solid framing and lock blocks
Robust 9mm MDF panels for solid doors

Other:
10mm trimming allowance on bottom rail
Suitable for regular door ironmongery
Rebated door pairs can be ordered from stock with a short lead time



Add the finishing touch... see page 106



View in our Door Visualiser



Civic White Clear Glass

Civic Black



FINISHED			
Size (mm)		Code	
1981	610	35	UCIV20BL
1981	686	35	UCIV23BL
1981	762	35	UCIV26BL
1981	838	35	UCIV29BL

Civic Black Clear Glass



FINISHED			
Size (mm)		Code	
1981	610	35	UCIV20GBL
1981	686	35	UCIV23GBL
1981	762	35	UCIV26GBL
1981	838	35	UCIV29GBL

Civic White



FINISHED			
Size (mm)		Code	
1981	610	35	UCIV20WH
1981	686	35	UCIV23WH
1981	762	35	UCIV26WH
1981	838	35	UCIV29WH

Civic White Clear Glass



FINISHED			
Size (mm)		Code	
1981	610	35	UCIV20GWH
1981	686	35	UCIV23GWH
1981	762	35	UCIV26GWH
1981	838	35	UCIV29GWH



Make a statement with a pocket door system see page 110

City Black, @project_34_selfbuild

Finish:
Black or white painted finish

Style:
Art deco style panels

Glazing:
Clear flat safety glass
City Black is also available with tinted glass
All glazed doors are constructed with individual panes for added stability
No risk of drilling into glass on glazed doors

Construction:
Solid framing and lock blocks
Robust 9mm MDF panels for solid doors

Other:
10mm trimming allowance on bottom rail
Suitable for regular door ironmongery
Rebated door pairs can be ordered from stock with a short lead time



View in our Door Visualiser

Add the finishing touch... see page 106



City Black Clear Glass

City Black



FINISHED			
Size (mm)		Code	
1981 610 35		UCIT20BL	
1981 686 35		UCIT23BL	
1981 762 35		UCIT26BL	
1981 838 35		UCIT29BL	

City Black Clear Glass



FINISHED			
Size (mm)		Code	
1981 610 35		UCIT20GBL	
1981 686 35		UCIT23GBL	
1981 762 35		UCIT26GBL	
1981 838 35		UCIT29GBL	

City Black Tinted Glass



FINISHED			
Size (mm)		Code	
1981 762 35		UCIT26GGBL	

City White



FINISHED			
Size (mm)		Code	
1981 610 35		UCIT20WH	
1981 686 35		UCIT23WH	
1981 762 35		UCIT26WH	
1981 838 35		UCIT29WH	

City White Clear Glass



FINISHED			
Size (mm)		Code	
1981 610 35		UCIT20GWH	
1981 686 35		UCIT23GWH	
1981 762 35		UCIT26GWH	
1981 838 35		UCIT29GWH	



Metro Black Clear Glass

Make a statement with a pocket door system
see page 110

Finish:

Black or white painted finish

Style:

5 Ladder style panels

Glazing:

Clear flat safety glass

All glazed doors are constructed with individual panes for added stability

No risk of drilling into glass on glazed doors

Construction:

Solid framing and lock blocks

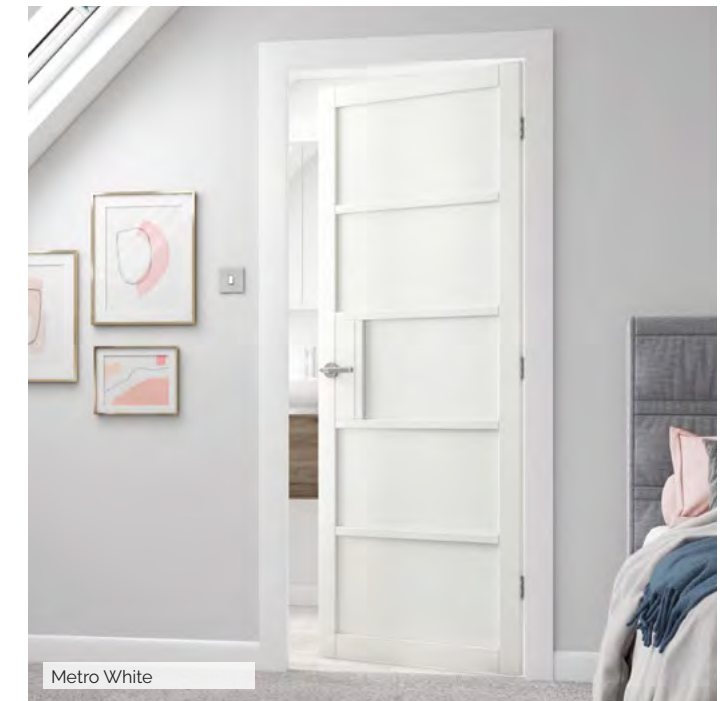
Robust 9mm MDF panels for solid doors

Other:

10mm trimming allowance on bottom rail

Suitable for regular door ironmongery

Rebated door pairs can be ordered from stock with a short lead time



Metro White

Metro Black



FINISHED			
Size (mm)		Code	
1981 610 35		UMET20BL	
1981 686 35		UMET23BL	
1981 762 35		UMET26BL	
1981 838 35		UMET29BL	

Metro Black Clear Glass



FINISHED			
Size (mm)		Code	
1981 610 35		UMET20GBL	
1981 686 35		UMET23GBL	
1981 762 35		UMET26GBL	
1981 838 35		UMET29GBL	

Metro White



FINISHED			
Size (mm)		Code	
1981 610 35		UMET20WH	
1981 686 35		UMET23WH	
1981 762 35		UMET26WH	
1981 838 35		UMET29WH	

Metro White Clear Glass



FINISHED			
Size (mm)		Code	
1981 610 35		UMET20GWH	
1981 686 35		UMET23GWH	
1981 762 35		UMET26GWH	
1981 838 35		UMET29GWH	

Add the finishing touch...
see page 106





Finish:

Black or white painted finish

Style:

10 industrial style panels

Glazing:

Clear flat safety glass

All glazed doors are constructed with individual panes for added stability

No risk of drilling into glass on glazed doors

Construction:

Solid framing and lock blocks

Robust 9mm MDF panels for solid doors

Other:

10mm trimming allowance on bottom rail

Suitable for regular door ironmongery

Rebated door pairs can be ordered from stock with a short lead time



Plaza White Clear Glass

Plaza Black



Add the finishing touch...

see page 106



Plaza Black Clear Glass



Plaza White



Plaza White Clear Glass



FINISHED		
Size (mm)		Code
1981 610 35		UPLA20BL
1981 686 35		UPLA23BL
1981 762 35		UPLA26BL
1981 838 35		UPLA29BL



FINISHED		
Size (mm)		Code
1981 610 35		UPLA20GBL
1981 686 35		UPLA23GBL
1981 762 35		UPLA26GBL
1981 838 35		UPLA29GBL



FINISHED		
Size (mm)		Code
1981 610 35		UPLA20WH
1981 686 35		UPLA23WH
1981 762 35		UPLA26WH
1981 838 35		UPLA29WH



FINISHED		
Size (mm)		Code
1981 610 35		UPLA20GWH
1981 686 35		UPLA23GWH
1981 762 35		UPLA26GWH
1981 838 35		UPLA29GWH

Vi View in our Door Visualiser

Make a statement with a pocket door system see page 110

Plaza Black



OAK

Real oak veneers are versatile and timeless. A stunning addition to any interior theme.



Make a statement with a pocket door system see page 110

Tigris Oak

Timber veneers are a natural material and variations in the colour and graining should be expected. Colours depicted are representative only.

Finish:
Finished oak veneer with real wood grooves

Style:
5 ladder style panels

Glazing:
Emral/Bela: clear flat safety glass with raised beading
Medina: clear diamond cut safety glass with raised beading

Construction:
Solid core construction

Other:
Certifire FD30 Fire doors



Add the finishing touch... see page 106



Tigris Oak



Tigris and Emral are available in Walnut and White, see pages 63 & 77.



Laminate versions are available in Light Grey, Dark Grey and Ivory, see pages 15 & 17.



FINISHED	
Size (mm)	Code
1981 533 35	OIS119
1981 610 35	OIS120
1981 686 35	OIS123
1981 762 35	OIS126
1981 838 35	OIS129
2040 626 40	OIS1626
2040 726 40	OIS1726
2040 826 40	OIS1826
1981 533 44	OIS19FD30
1981 610 44	OIS20FD30
1981 686 44	OIS23FD30
1981 762 44	OIS26FD30
1981 838 44	OIS29FD30
2040 726 44	OIS126FD30
2040 826 44	OIS1826FD30
2040 926 44	OIS1926FD30

Rebated door pairs available from stock for 35mm 610/686/762/838mm sizes.



Medina

Emral Oak



FINISHED	
Size (mm)	Code
1981 686 35	OEMR23
1981 762 35	OEMR26
1981 838 35	OEMR29
1981 686 44	OEMR23FD30
1981 762 44	OEMR26FD30
1981 838 44	OEMR29FD30

Medina



FINISHED	
Size (mm)	Code
1981 686 35	OMED23G
1981 762 35	OMED26G
1981 838 35	OMED29G
2040 626 40	OMED626G
2040 726 40	OMED726G
2040 826 40	OMED826G

Rebated door pairs available from stock for 35mm 686/762/838mm sizes. Glazed fire doors are available to order.

Bela



FINISHED	
Size (mm)	Code
1981 610 35	OBEL20
1981 686 35	OBEL23
1981 762 35	OBEL26
1981 838 35	OBEL29

- Bespoke options
- View in our Door Visualiser
- Option for PAS 24, see page 116



Timber veneers are a natural material and variations in the colour and graining should be expected. Colours depicted are representative only.

Mistral Oak Glazed

Make a statement with a pocket door system
see page 110

- Finish:**
Finished oak veneer with MDF grooves
- Style:**
3 ladder style panels
- Glazing:**
Clear flat safety glass with flush beading
- Construction:**
Semi-solid core construction
Bi-fold: solid core construction
- Other:**
🔥 FD30 Fire doors
All fire doors are solid core construction



Add the finishing touch...
see page 106



Mistral Oak



Mistral Oak and Mistral Oak Glazed are also available in Walnut and White, see pages 65 & 79.



FINISHED		
Size (mm)		Code
1981 533 35		OMIS19
1981 610 35		OMIS20
1981 686 35		OMIS23
1981 762 35		OMIS26
1981 838 35		OMIS29
2040 526 40		OMIS526
2040 626 40		OMIS626
2040 726 40		OMIS726
2040 826 40		OMIS826
1981 610 44		OMIS20FD30 🔥
1981 686 44		OMIS23FD30 🔥
1981 762 44		OMIS26FD30 🔥
1981 838 44		OMIS29FD30 🔥
2040 726 44		OMIS726FD30 🔥
2040 826 44		OMIS826FD30 🔥
2040 926 44		OMIS926FD30 🔥



Mistral Oak

Mistral Oak Glazed



FINISHED		
Size (mm)		Code
1981 686 35		OMIS23G
1981 762 35		OMIS26G
1981 838 35		OMIS29G
2040 626 40		OMIS626G
2040 726 40		OMIS726G
2040 826 40		OMIS826G

Glazed fire doors with raised beading available to order.

🔧 Bespoke options

👁️ View in our Door Visualiser

🔧 Option for PAS 24, see page 116

Mistral Oak Bi-fold



Bi-folds are easy to install into existing flush linings (without door stop). Supplied ready hinged with pivots, brackets and a sliding track. Please note that the actual bi-fold supplied is slightly smaller than the door size listed, to accommodate tracking.



FINISHED		
Size (mm)		Code
1981 762 35		OMISBF26

Mistral Oak Bi-fold is also available in White, see page 79.





Palomino (shown finished)

Make a statement with a pocket door system
see page 110

Timber veneers are a natural material and variations in the colour and graining should be expected. Colours depicted are representative only.

- Finish:**
Unfinished oak veneer with real wood grooves
- Style:**
7 ladder style panels
- Glazing:**
Clear flat safety glass with raised beading
- Construction:**
Solid core construction
- Other:**
🔥 FD30 Fire doors



Add the finishing touch...
see page 106



Palomino



Palomino Glazed



Square cut grooves



UNFINISHED*

Size (mm)	Code
1981 610 35	OPAL20
1981 686 35	OPAL23
1981 762 35	OPAL26
1981 838 35	OPAL29
1981 610 44	OPAL20FD30 🔥
1981 686 44	OPAL23FD30 🔥
1981 762 44	OPAL26FD30 🔥
1981 838 44	OPAL29FD30 🔥

UNFINISHED*

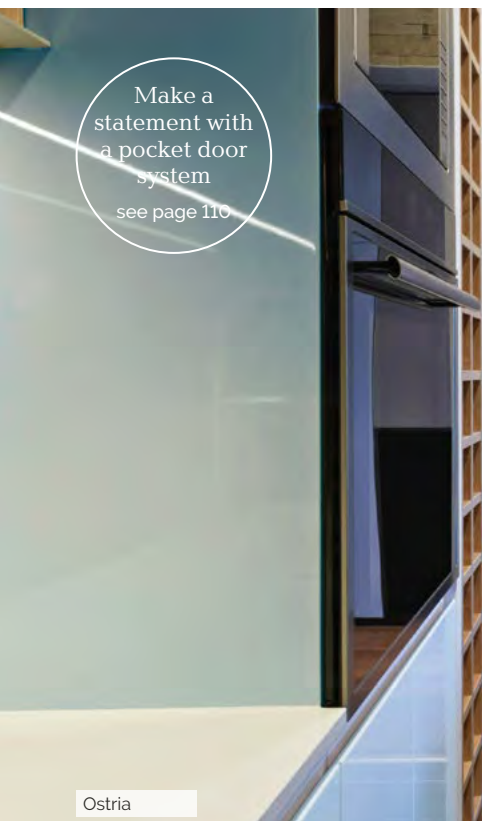
Size (mm)	Code
1981 686 35	OPAL23G
1981 762 35	OPAL26G
1981 838 35	OPAL29G

Glazed fire doors available to order with clear flat glass.

- * Finished available to order
- 🔧 Bespoke options
- 👁️ View in our Door Visualiser
- 🔒 Option for PAS 24, see page 116



Palomino Glazed (shown finished)



Make a statement with a pocket door system see page 110

Ostria



Timber veneers are a natural material and variations in the colour and graining should be expected. Colours depicted are representative only.



Sirocco



Blenheim

Finish:
Finished oak veneer

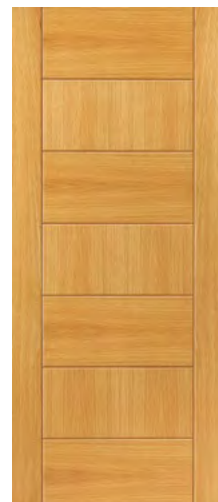
Style:
Sirocco: Grooved into MDF with alternate horizontal and vertical veneers
Ostria: horizontal veneers with vertical stiles
Chartwell/Blenheim: dark wood inlay
Clementine/Spencer: walnut inlay

Glazing:
Sirocco & Ostria: clear flat safety glass with flush beading
Blenheim & Spencer: clear flat safety glass with raised beading
Blenheim FD30: is clear flat fire glass

Construction:
Semi-solid core construction apart from Clementine & Spencer which are solid core

Other:
 Certifire FD30 Fire doors
 FD30 Fire doors
 All fire doors are solid core construction

Sirocco



FINISHED		
Size (mm)		Code
1981 610 35		OSIR20
1981 686 35		OSIR23
1981 762 35		OSIR26
1981 838 35		OSIR29
1981 686 44		OSIR23FD30
1981 762 44		OSIR26FD30
1981 838 44		OSIR29FD30

Sirocco Glazed



FINISHED		
Size (mm)		Code
1981 686 35		OSIR23G
1981 762 35		OSIR26G
1981 838 35		OSIR29G
Glazed fire doors with raised beading available to order.		

Ostria



FINISHED		
Size (mm)		Code
1981 610 35		OOST20
1981 686 35		OOST23
1981 762 35		OOST26
1981 838 35		OOST29
1981 686 44		OOST23FD30
1981 762 44		OOST26FD30
1981 838 44		OOST29FD30

Ostria Glazed



FINISHED		
Size (mm)		Code
1981 686 35		OOST23G
1981 762 35		OOST26G
1981 838 35		OOST29G
Glazed fire doors with raised beading available to order.		

Chartwell



FINISHED		
Size (mm)		Code
1981 533 35		CCHA19
1981 610 35		CCHA20
1981 686 35		CCHA23
1981 762 35		CCHA26
1981 838 35		CCHA29
1981 686 44		CCHA23FD30
1981 762 44		CCHA26FD30
1981 838 44		CCHA29FD30

Blenheim



FINISHED		
Size (mm)		Code
1981 686 35		CBLE23
1981 762 35		CBLE26
1981 838 35		CBLE29
1981 762 44		CBLE26FD30G
1981 838 44		CBLE29FD30G

Clementine



FINISHED		
Size (mm)		Code
1981 533 35		CCLE19
1981 610 35		CCLE20
1981 686 35		CCLE23
1981 762 35		CCLE26
1981 838 35		CCLE29
1981 686 44		CCL23FD30
1981 762 44		CCL26FD30
1981 838 44		CCL29FD30

Spencer



FINISHED		
Size (mm)		Code
1981 686 35		CSPE23
1981 762 35		CSPE26
1981 838 35		CSPE29
Glazed fire doors available to order.		



Bespoke options
 Option for PAS 24, see page 116



Timber veneers are a natural material and variations in the colour and graining should be expected. Colours depicted are representative only.

Make a statement with a pocket door system see page 110

Thames Oak (shown finished)

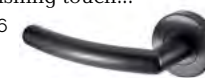
- Finish:**
Unfinished & finished oak veneer
- Style:**
Grooved cottage style centre panel
- Glazing:**
1 Light: clear flat safety glass with etched lines
1 Light FD30: clear fire glass with etched lines and raised beading
- Construction:**
Solid core construction
- Other:**
18mm long edge lippings
🔥 FD30 Fire doors
Rebated door pairs can be ordered from stock (not fire doors) with a short lead time.



Thames Oak



Add the finishing touch... see page 106



The grooved centre panel is full door thickness



Clear glass with etched lines



Thames Oak 1 Light



Thames Oak 1 Light FD30



UNFINISHED

Size (mm)	Code
1981 457 35	OTHA16
1981 533 35	OTHA19
1981 610 35	OTHA20
1981 686 35	OTHA23
1981 711 35	OTHA24
1981 762 35	OTHA26
1981 838 35	OTHA29
2040 626 40	OTHA626
2040 726 40	OTHA726
2040 826 40	OTHA826
2040 926 40	OTHA926
1981 610 44	OTHA20FD30 🔥
1981 686 44	OTHA23FD30 🔥
1981 762 44	OTHA26FD30 🔥
1981 838 44	OTHA29FD30 🔥
2040 726 44	OTHA726FD30 🔥
2040 826 44	OTHA826FD30 🔥
2040 926 44	OTHA926FD30 🔥

FINISHED

Size (mm)	Code
1981 457 35	VOTHA16
1981 533 35	VOTHA19
1981 610 35	VOTHA20
1981 686 35	VOTHA23
1981 711 35	VOTHA24
1981 762 35	VOTHA26
1981 838 35	VOTHA29
2040 626 40	VOTHA626
2040 726 40	VOTHA726
2040 826 40	VOTHA826
2040 926 40	VOTHA926
1981 610 44	VOTHA20FD30 🔥
1981 686 44	VOTHA23FD30 🔥
1981 762 44	VOTHA26FD30 🔥
1981 838 44	VOTHA29FD30 🔥
2040 726 44	VOTHA726FD30 🔥
2040 826 44	VOTHA826FD30 🔥
2040 926 44	VOTHA926FD30 🔥

Thames Oak is also available in White, see page 73.



UNFINISHED

Size (mm)	Code
1981 610 35	OTHA1L20*
1981 686 35	OTHA1L23
1981 762 35	OTHA1L26
1981 838 35	OTHA1L29
2040 626 40	OTHA1L626
2040 726 40	OTHA1L726
2040 826 40	OTHA1L826

FINISHED

1981 686 35	VOTHA1L23
1981 762 35	VOTHA1L26
1981 838 35	VOTHA1L29
2040 626 40	VOTHA1L626
2040 726 40	VOTHA1L726
2040 826 40	VOTHA1L826

UNFINISHED*

Size (mm)	Code
1981 686 44	OTHA1L23FD30 🔥
1981 726 44	OTHA1L26FD30 🔥
1981 838 44	OTHA1L29FD30 🔥

* Finished available to order

🔧 Bespoke options

👁️ View in our Door Visualiser

🔗 Option for PAS 24, see page 116



Thames Oak 6 Light (shown finished)



Thames Oak 1/2 Light (shown finished)



Cherwell

Make a statement with a pocket door system see page 110

Finish:
Unfinished & finished oak veneer

Style:
Grooved cottage style panels

Glazing:
6 Light: clear flat safety glass
1/2 light: clear flat safety glass with etched lines

Construction:
Solid core construction

Other:
18mm long edge lippings
Rebated door pairs can be ordered from stock (not bi-folds) with a short lead time.



Thames Oak 6 Light



UNFINISHED			
Size (mm)		Code	
1981	686	35	OTHA6L23
1981	762	35	OTHA6L26
1981	838	35	OTHA6L29
2040	626	40	OTHA6L626*
2040	726	40	OTHA6L726*
2040	826	40	OTHA6L826*
FINISHED			
1981	686	35	VOTHA6L23
1981	762	35	VOTHA6L26
1981	838	35	VOTHA6L29

Thames Oak 1/2 Light



UNFINISHED			
Size (mm)		Code	
1981	686	35	OTHAVL23
1981	762	35	OTHAVL26
1981	838	35	OTHAVL29
FINISHED			
1981	686	35	VOTHAVL23
1981	762	35	VOTHAVL26
1981	838	35	VOTHAVL29

Thames Oak 1/2 Light is also available in White, see page 73.



Thames Oak Bi-fold



UNFINISHED*			
Size (mm)		Code	
1981	762	35	OTHABF26

Bi-folds are easy to install into existing flush linings (without door stop). Supplied ready hinged with pivots, brackets and a sliding track. Please note that the actual bi-fold supplied is slightly smaller than the door size listed, to accommodate tracking.

Finish:
Prefinished oak veneer

Style:
Full length vertical grooves

Glazing:
Clear flat safety glass with raised beading

Construction:
Solid core construction

Other:
Certifire FD30 Fire doors



Add the finishing touch... see page 106



Timber veneers are a natural material and variations in the colour and graining should be expected. Colours depicted are representative only.

* Finished available to order
Bespoke options

Cherwell



Cherwell Glazed



FINISHED			
Size (mm)		Code	
1981	610	35	VOCHE20
1981	686	35	VOCHE23
1981	762	35	VOCHE26
1981	838	35	VOCHE29
1981	686	44	VOCHE23FD30
1981	762	44	VOCHE26FD30
1981	838	44	VOCHE29FD30



FINISHED			
Size (mm)		Code	
1981	686	35	VOCHE23G
1981	762	35	VOCHE26G
1981	838	35	VOCHE29G

Glazed fire doors available to order.



Rustic Oak Ledged (shown finished)

Timber veneers are a natural material and variations in the colour and graining should be expected. Colours depicted are representative only.

Finish:
 Panelled doors: finished oak veneer
 Ledged: unfinished oak veneer

Style:
 Natural knotty appearance
 4 Panel/DX: recessed flat panels
 Ledged: individual planks fixed with ledges

Glazing:
 4 Panel: clear flat safety glass
 DX: opaque flat safety glass

Construction:
 Solid core construction

Add the finishing touch...
 see page 106



Rustic Oak
4 Panel



FINISHED	
Size (mm)	Code
1981 610 35	RO4P20
1981 686 35	RO4P23
1981 762 35	RO4P26
1981 838 35	RO4P29

Rustic Oak
4 Panel Glazed



FINISHED	
Size (mm)	Code
1981 762 35	RO4P2TL26

Rustic Oak DX



FINISHED	
Size (mm)	Code
1981 610 35	RODX20
1981 686 35	RODX23
1981 762 35	RODX26
1981 838 35	RODX29

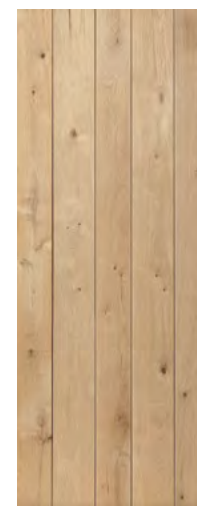
Rustic Oak
DX Glazed



FINISHED	
Size (mm)	Code
1981 762 35	RODXTL26

* Finished available to order
 View in our Door Visualiser

Rustic Oak Ledged
Front view



Back view



Back view with braces



If you wish to create a Ledged and Braced style, the Braces are available separately.

Note:
 40mm thickness =
 20mm plank +
 20mm ledge



UNFINISHED*	
Size (mm)	Code
1981 686 40	ROLED23
1981 762 40	ROLED26
1981 838 40	ROLED29

LEDGED BRACE PACK (2 PER PACK)	
Size (mm)	Code
1000 120 15	ROLEDBRPACK



Finish:

Axis: finished oak veneer
 Rushmore, Snowdon & Nevis:
 unfinished oak veneer

Style:

Recessed flat panels

Glazing:

Clear flat safety glass

Construction:

Solid core construction

Other:

🔥 FD30 Fire doors

Rebated door pairs can be ordered from stock (not fire doors or bi-folds) with a short lead time.

Add the finishing touch...

see page 106



Axis Oak is also available White, see page 87.



FINISHED

Size (mm)	Code
1981 610 35	VOAXI20
1981 686 35	VOAXI23
1981 762 35	VOAXI26
1981 838 35	VOAXI29
1981 686 44	VOAXI23FD30 🔥
1981 762 44	VOAXI26FD30 🔥
1981 838 44	VOAXI29FD30 🔥

Axis Oak



Axis Oak Glazed



FINISHED

Size (mm)	Code
1981 686 35	VOAXI23G
1981 762 35	VOAXI26G
1981 838 35	VOAXI29G

Rushmore Oak



UNFINISHED*

Size (mm)	Code
1981 610 35	ORUS20
1981 686 35	ORUS23
1981 762 35	ORUS26
1981 838 35	ORUS29
1981 686 44	ORUS23FD30 🔥
1981 762 44	ORUS26FD30 🔥
1981 838 44	ORUS29FD30 🔥

Rushmore Oak is also available in White, see page 90.



Snowdon



UNFINISHED*

Size (mm)	Code
1981 610 35	OSNO20
1981 686 35	OSNO23
1981 762 35	OSNO26
1981 838 35	OSNO29
1981 686 44	OSNO23FD30 🔥
1981 762 44	OSNO26FD30 🔥
1981 838 44	OSNO29FD30 🔥

Snowdon Bi-fold



UNFINISHED*

1981 762 35 OSNOBF26
 Bi-folds are easy to install into existing flush linings (without door stop). Supplied ready hinged with pivots, brackets and a sliding track. Please note that the actual bi-fold supplied is slightly smaller than the door size listed, to accommodate tracking.

Nevis



UNFINISHED*

Size (mm)	Code
1981 686 35	ONEV23
1981 762 35	ONEV26
1981 838 35	ONEV29

Finished available to order

Vi View in our Door Visualiser

Timber veneers are a natural material and variations in the colour and graining should be expected. Colours depicted are representative only.

Make a statement with a pocket door system see page 110

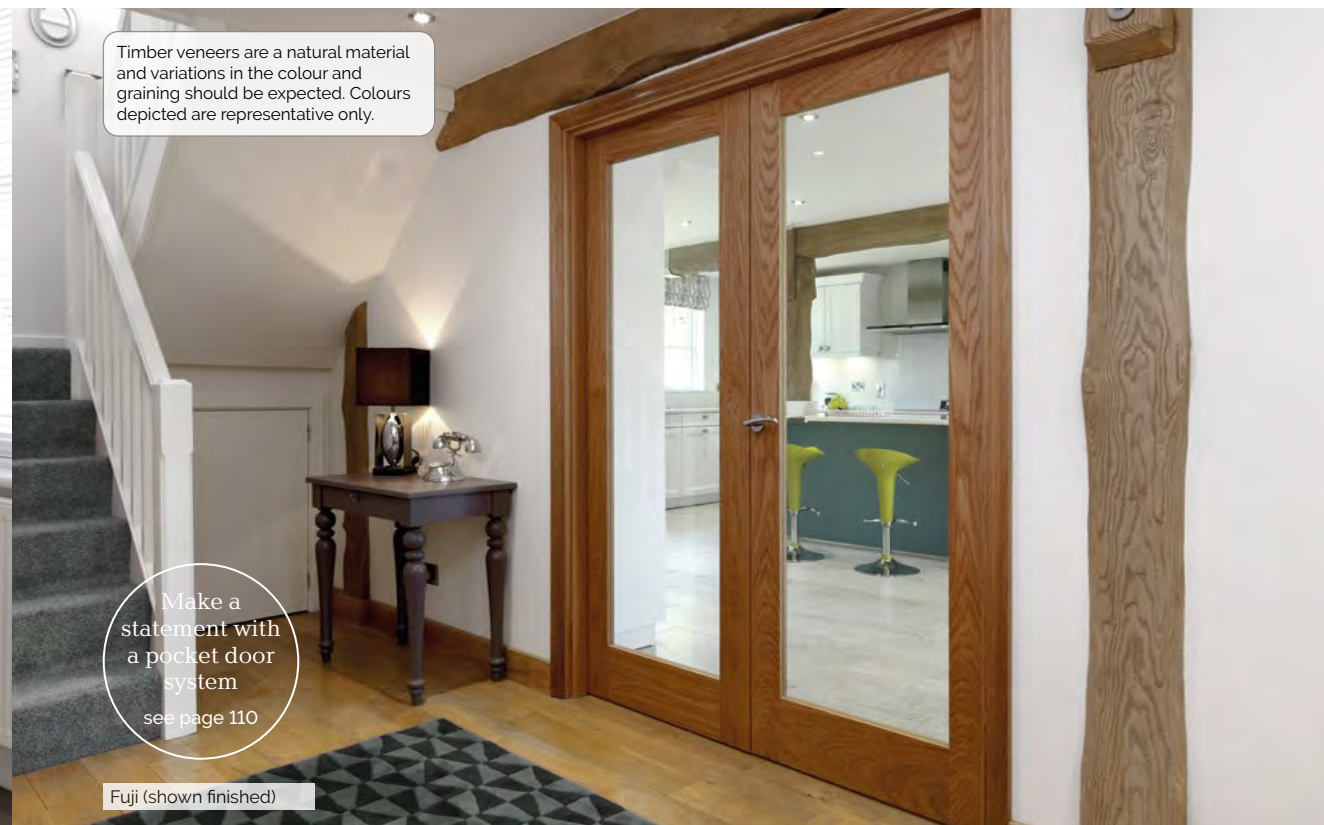
Axis Oak Glazed



Etna (shown finished)



Eiger (shown finished)



Timber veneers are a natural material and variations in the colour and graining should be expected. Colours depicted are representative only.

Make a statement with a pocket door system see page 110

Fuji (shown finished)

- Finish:** Unfinished oak veneer
 - Style:** Recessed flat panels
 - Glazing:** Clear flat safety glass
Fuji FD30: clear flat fire glass with raised beading
 - Construction:** Solid core construction
 - Other:**
 - 🔥 FD30 Fire doors
- Rebated door pairs can be ordered from stock (not fire doors or bi-folds) with a short lead time.

The Etna and Fuji are also available in White, see Antigua and Tobago on pages 90 & 91.



Bi-folds are easy to install into existing flush linings (without door stop). Supplied ready hinged with pivots, brackets and a sliding track. Please note that the actual bi-fold supplied is slightly smaller than the door size listed, to accommodate tracking.

Etna



UNFINISHED*

Size (mm)	Code
1981 610 35	OETN20
1981 686 35	OETN23
1981 762 35	OETN26
1981 838 35	OETN29
1981 686 44	OETN23FD30 🔥
1981 762 44	OETN26FD30 🔥
1981 838 44	OETN29FD30 🔥

Etna Bi-fold



UNFINISHED*

Size (mm)	Code
1981 762 35	OETNBF26

Eiger



UNFINISHED*

Size (mm)	Code
1981 610 35	OEIG20
1981 686 35	OEIG23
1981 762 35	OEIG26
1981 838 35	OEIG29
1981 686 44	OEIG23FD30 🔥
1981 762 44	OEIG26FD30 🔥
1981 838 44	OEIG29FD30 🔥

Matterhorn



UNFINISHED*

Size (mm)	Code
1981 686 35	OMAT23
1981 762 35	OMAT26
1981 838 35	OMAT29

Fuji



UNFINISHED*

Size (mm)	Code
1981 686 35	OFUJ23
1981 762 35	OFUJ26
1981 838 35	OFUJ29

Fuji FD30



UNFINISHED*

Size (mm)	Code
1981 686 44	OFUJ23FD30 🔥
1981 762 44	OFUJ26FD30 🔥
1981 838 44	OFUJ29FD30 🔥

Fuji Bi-fold



UNFINISHED*

Size (mm)	Code
1981 762 35	OFUJBF26

Finished available to order
 View in our Door Visualiser



Timber veneers are a natural material and variations in the colour and graining should be expected. Colours depicted are representative only.

Derwent (shown finished)

Make a statement with a pocket door system
see page 110

Finish:
Unfinished and finished oak veneer

Style:
Derwent, Severn & Churnet:
flat recessed panels
Trent & Dove: raised shaped panels

Glazing:
Severn: clear flat safety glass
Churnet: diamond leaded safety glass
Dove: clear bevelled safety glass

Construction:
Solid core construction

Other:
🔥 FD30 fire doors
Dove Pairs: rebated meeting stiles, left hand open away



Add the finishing touch...
see page 106



Derwent



UNFINISHED*

Size (mm)	Code
1981 610 35	ODER20
1981 686 35	ODER23
1981 762 35	ODER26
1981 838 35	ODER29
2032 813 35	ODER28
1981 686 44	ODER23FD30 🔥
1981 762 44	ODER26FD30 🔥
1981 838 44	ODER29FD30 🔥

Severn



UNFINISHED*

Size (mm)	Code
1981 686 35	OSEV23G
1981 762 35	OSEV26G
1981 838 35	OSEV29G

Churnet



UNFINISHED*

Size (mm)	Code
1981 686 35	OCHUDL23
1981 762 35	OCHUDL26
1981 838 35	OCHUDL29

Trent



UNFINISHED

Size (mm)	Code
1981 457 35	OTRE16*
1981 533 35	OTRE19*
1981 610 35	OTRE20
1981 686 35	OTRE23
1981 762 35	OTRE26
1981 838 35	OTRE29
2032 813 35	OTRE28*
1981 686 44	OTRE23FD30 🔥
1981 762 44	OTRE26FD30 🔥
1981 838 44	OTRE29FD30 🔥

FINISHED

Size (mm)	Code
1981 610 35	VOTRE20
1981 686 35	VOTRE23
1981 762 35	VOTRE26
1981 838 35	VOTRE29
1981 686 44	VOTRE23FD30 🔥
1981 762 44	VOTRE26FD30 🔥
1981 838 44	VOTRE29FD30 🔥

Dove



UNFINISHED*

Size (mm)	Code
1981 610 35	ODOV20
1981 686 35	ODOV23
1981 762 35	ODOV26
1981 838 35	ODOV29

FINISHED

Size (mm)	Code
1981 762 35	VODOV26

Dove Pairs



UNFINISHED*

Size (mm)	Code
1981 1219 35	ODOV40
1981 1372 35	ODOV46
1981 1524 35	ODOV50

* Finished available to order



Make a statement with a pocket door system
see page 110

Darwen (shown finished)

Timber veneers are a natural material and variations in the colour and graining should be expected. Colours depicted are representative only.

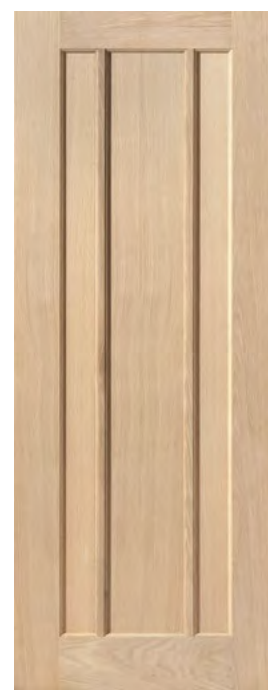
- Finish:**
Unfinished oak veneer
- Style:**
Eden/Darwen: flat panel with decorative muntins
Mersey: raised shaped panels
- Glazing:**
Clear flat safety glass
- Construction:**
Solid core construction
- Other:**
🔥 FD30 Fire doors



Add the finishing touch...
see page 106



Eden



Eden and Darwen are also available in White, see Jamaica and Trinidad on page 92.



UNFINISHED*	
Size (mm)	Code
1981 610 35	OEDE20
1981 686 35	OEDE23
1981 762 35	OEDE26
1981 838 35	OEDE29
1981 686 44	OEDE23FD30 🔥
1981 762 44	OEDE26FD30 🔥
1981 838 44	OEDE29FD30 🔥



Mersey (shown finished)

Darwen



UNFINISHED*	
Size (mm)	Code
1981 686 35	ODAR23G
1981 762 35	ODAR26G
1981 838 35	ODAR29G

Mersey



UNFINISHED*	
Size (mm)	Code
1981 610 35	OMER20
1981 686 35	OMER23
1981 762 35	OMER26
1981 838 35	OMER29
1981 762 44	OMER26FD30 🔥
1981 838 44	OMER29FD30 🔥

Humber



UNFINISHED*	
Size (mm)	Code
1981 762 35	OHUM26
1981 838 35	OHUM29

* Finished available to order



Make a statement with a pocket door system see page 110

Timber veneers are a natural material and variations in the colour and graining should be expected. Colours depicted are representative only.

Grizedale

- Finish:**
Finished oak veneer
- Style:**
Raised shaped panels
- Glazing:**
Clear flat safety glass
- Construction:**
Solid core construction
- Other:**
🔥 FD30 Fire doors



Add the finishing touch... see page 106



Sherwood



FINISHED			
Size (mm)			Code
1981	610	35	VSO4P20
1981	686	35	VSO4P23
1981	762	35	VSO4P26
1981	838	35	VSO4P29
1981	610	44	VSO4P20FD30 🔥
1981	686	44	VSO4P23FD30 🔥
1981	762	44	VSO4P26FD30 🔥
1981	838	44	VSO4P29FD30 🔥

Grizedale



FINISHED			
Size (mm)			Code
1981	610	35	VSO6P20
1981	686	35	VSO6P23
1981	762	35	VSO6P26
1981	838	35	VSO6P29
1981	686	44	VSO6P23FD30 🔥
1981	762	44	VSO6P26FD30 🔥
1981	838	44	VSO6P29FD30 🔥

Dean



FINISHED			
Size (mm)			Code
1981	686	35	VSO6L2P23G
1981	762	35	VSO6L2P26G
1981	838	35	VSO6L2P29G

Charnwood



FINISHED			
Size (mm)			Code
1981	533	35	VSO2P19
1981	610	35	VSO2P20
1981	686	35	VSO2P23
1981	762	35	VSO2P26
1981	838	35	VSO2P29
1981	686	44	VSO2P23FD30 🔥
1981	762	44	VSO2P26FD30 🔥
1981	838	44	VSO2P29FD30 🔥

Arden



FINISHED			
Size (mm)			Code
1981	762	35	VSO6LIP26G
1981	838	35	VSO6LIP29G

Gisburn



FINISHED			
Size (mm)			Code
1981	686	35	VSO10L23G
1981	762	35	VSO10L26G
1981	838	35	VSO10L29G



WALNUT

Stylish and refined, this naturally dark coloured wood brings warmth and a touch of luxury to modern classic interiors.



Finish:
Finished walnut veneer

Style:
5 ladder style panels, grooved into real wood

Glazing:
Clear flat safety glass with raised beading

Construction:
Solid core construction

Other:
Certifire FD30 Fire doors



FINISHED	
Size (mm)	Code
1981 610 35	WTIG20
1981 686 35	WTIG23
1981 762 35	WTIG26
1981 838 35	WTIG29
1981 686 44	WTIG23FD30
1981 762 44	WTIG26FD30
1981 838 44	WTIG29FD30

Tigris Walnut



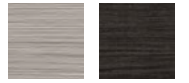
Emral Walnut



Tigris and Emral are available in Oak and White, see pages 37 & 77.



Laminate versions are available in Light Grey, Dark Grey and Ivory, see pages 15 & 17.



FINISHED	
Size (mm)	Code
1981 686 35	WEMR23
1981 762 35	WEMR26
1981 838 35	WEMR29

Glazed fire doors available to order.

Add the finishing touch... see page 106



- Bespoke options
- View in our Door Visualiser
- Option for PAS 24, see page 116

Make a statement with a pocket door system see page 110

Tigris Walnut

Timber veneers are a natural material and variations in the colour and graining should be expected. Colours depicted are representative only.



Tigris Walnut

Make a statement with a pocket door system see page 110



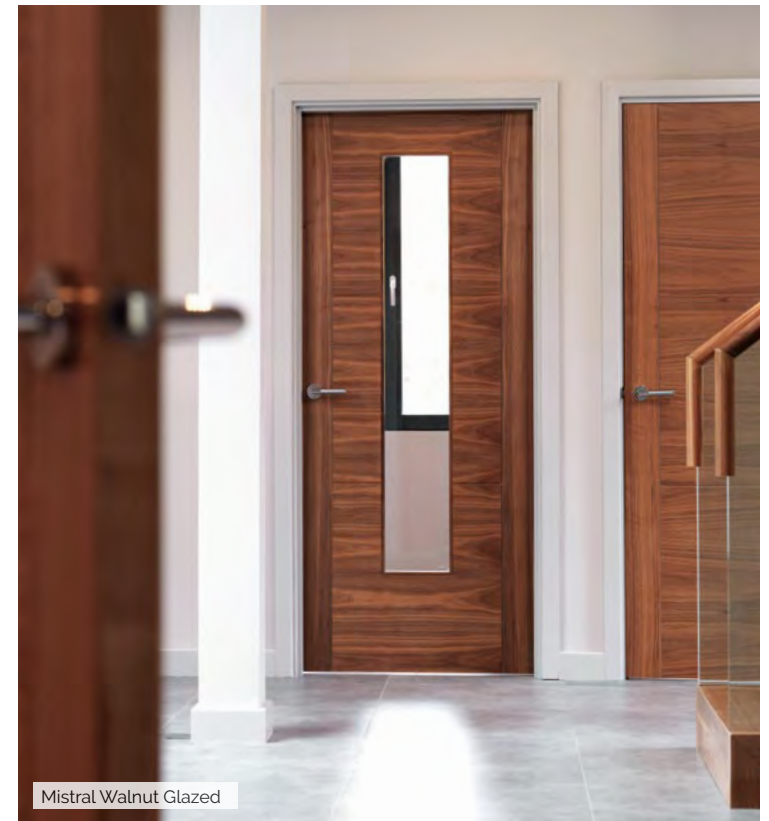
Mistral Walnut

Timber veneers are a natural material and variations in the colour and graining should be expected. Colours depicted are representative only.

- Finish:**
Finished walnut veneer
- Style:**
3 ladder style panels, grooved into MDF
- Glazing:**
Clear flat safety glass with flush beading
- Construction:**
Semi-solid core construction
- Other:**
🔥 FD30 Fire doors
All fire doors are solid core construction



Add the finishing touch... see page 106



Mistral Walnut Glazed

Mistral Walnut



Mistral Walnut is available in Oak and White, see pages 39 & 79.



FINISHED		
Size (mm)		Code
1981 610 35		WMIS20
1981 686 35		WMIS23
1981 762 35		WMIS26
1981 838 35		WMIS29
2040 526 40		WMIS526
2040 626 40		WMIS626
2040 726 40		WMIS726
2040 826 40		WMIS826
1981 686 44		WMIS23FD30 🔥
1981 762 44		WMIS26FD30 🔥
1981 838 44		WMIS29FD30 🔥
2040 726 44		WMIS726FD30 🔥
2040 826 44		WMIS826FD30 🔥
2040 926 44		WMIS926FD30 🔥

Mistral Walnut Glazed



FINISHED		
Size (mm)		Code
1981 686 35		WMIS23G
1981 762 35		WMIS26G
1981 838 35		WMIS29G
2040 626 40		WMIS626G
2040 726 40		WMIS726G
2040 826 40		WMIS826G

Glazed fire doors with raised beading available to order.

- 🔧 Bespoke options
- 👁️ View in our Door Visualiser
- 🔧 Option for PAS 24, see page 116



PAINTED FINISH

State-of-the-art technology is used to create realistic timber graining, achieving a perfect, uniform look.



Pintado Grey

Make a statement with a pocket door system see page 110

Finish:
Painted mid-grey and oak colour finishes with vertical grain

Style:
Pintado Grey: plain flush
Tate & Louvre: 5 horizontal panels, grooved into MDF

Glazing:
Clear flat safety glass with raised beading

Construction:
Pintado Grey: semi-solid core construction
Tate & Louvre: standard core construction

Other:
🔥 Certifire FD30 Fire doors
All fire doors are solid core construction

If trimming is required the door edges will need retouching. See website for colour match information.



Louvre



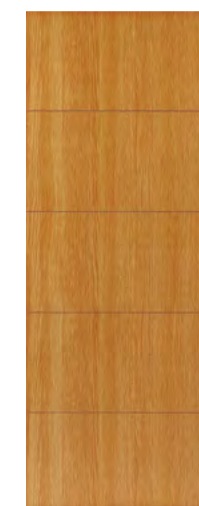
Pintado Grey



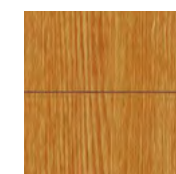
Pintado Grey Glazed



Tate



Louvre



FINISHED		
Size (mm)		Code
1981 610 35		NGPINT20
1981 686 35		NGPINT23
1981 762 35		NGPINT26
1981 838 35		NGPINT29
1981 610 44		NGPINT20FD30 🔥
1981 686 44		NGPINT23FD30 🔥
1981 762 44		NGPINT26FD30 🔥
1981 838 44		NGPINT29FD30 🔥



FINISHED		
Size (mm)		Code
1981 686 35		NGPINT23G
1981 762 35		NGPINT26G
1981 838 35		NGPINT29G

Glazed fire doors available to order.



FINISHED		
Size (mm)		Code
1981 610 35		GTAT20
1981 686 35		GTAT23
1981 762 35		GTAT26
1981 838 35		GTAT29
1981 610 44		GTAT20FD30 🔥
1981 686 44		GTAT23FD30 🔥
1981 762 44		GTAT26FD30 🔥
1981 838 44		GTAT29FD30 🔥



FINISHED		
Size (mm)		Code
1981 686 35		GLOU23
1981 762 35		GLOU26
1981 838 35		GLOU29

Glazed fire doors available to order.

- 🔧 Bespoke options
- 👁️ View in our Door Visualiser
- 🏠 Option for PAS 24, see page 116
- 🔗 Matching door pairs cannot be guaranteed



WHITE

White doors are a wonderful way to brighten up your home, perfect for all interior design themes.



Finish:
White primed

Style:
Grooved cottage style centre panel

Glazing:
Clear flat safety glass with raised beading

Construction:
Semi-solid core construction

Other:
🔥 FD30 Fire doors
All fire doors are solid core construction
Rebated door pairs can be ordered from stock (not fire doors) with a short lead time.



Add the finishing touch...
see page 106



Thames White Half Light

NEW Thames White



NEW Thames White Half Light



Thames White is available in Oak, see pages 45 & 46.



PRIMED			
Size (mm)			Code
1981	610	35	LTHA20
1981	686	35	LTHA23
1981	762	35	LTHA26
1981	838	35	LTHA29
2040	526	40	LTHA526
2040	626	40	LTHA626
2040	726	40	LTHA726
2040	826	40	LTHA826
1981	610	44	LTHA20FD30 🔥
1981	686	44	LTHA23FD30 🔥
1981	762	44	LTHA26FD30 🔥
1981	838	44	LTHA29FD30 🔥
2040	626	44	LTHA626FD30 🔥
2040	726	44	LTHA726FD30 🔥
2040	826	44	LTHA826FD30 🔥
2040	926	44	LTHA926FD30 🔥



PRIMED			
Size (mm)			Code
1981	610	35	LTHA1L20
1981	686	35	LTHA1L23
1981	762	35	LTHA1L26
1981	838	35	LTHA1L29
2040	626	40	LTHA1L626
2040	726	40	LTHA1L726
2040	826	40	LTHA1L826

View in our Door Visualiser
Option for PAS 24, see page 116

Make a statement with a pocket door system
see page 110

Thames White



Aria White

Make a statement with a pocket door system
see page 110

- Finish:**
White primed
- Style:**
Fluted door design
- Glazing:**
Clear flat safety glass with raised beading
- Construction:**
Solid core construction
- Other:**
 - 🔥 FD30 Fire doors
 Rebated door pairs can be ordered from stock (not fire doors) with a short lead time.



Aria White Glazed

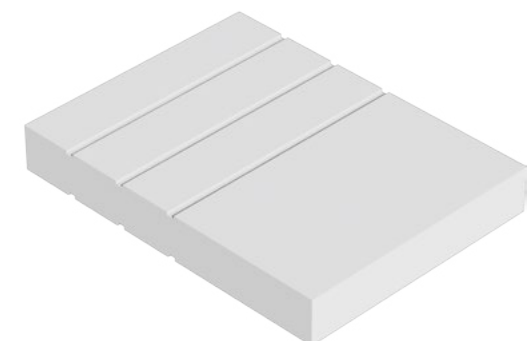
NEW Aria White



NEW Aria White Glazed



Add the finishing touch...
see page 106



PRIMED		
Size (mm)		Code
1981 610 35		WARI20
1981 686 35		WARI23
1981 762 35		WARI26
1981 838 35		WARI29
1981 610 44		WARI20FD30 🔥
1981 686 44		WARI23FD30 🔥
1981 762 44		WARI26FD30 🔥
1981 838 44		WARI29FD30 🔥



PRIMED		
Size (mm)		Code
1981 610 35		WARI20G
1981 686 35		WARI23G
1981 762 35		WARI26G
1981 838 35		WARI29G

Aria is also available in Black, Oak and Grey, see pages 9, 11 & 13.



Vi View in our Door Visualiser

Make a statement with a pocket door system see page 110




Tigris White

Finish:
Finished white

Style:
5 ladder style panels, grooved into MDF

Glazing:
Clear flat safety glass with flush beading

Construction:
Standard core construction

Other:
 Certifire FD30 Fire doors
 All fire doors are solid core construction
 Rebated door pairs can be ordered from stock (not bi-fold or fire doors) with a short lead time. Contact us for fire door options.



Add the finishing touch... see page 106



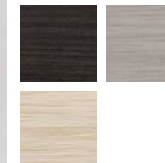
Tigris White







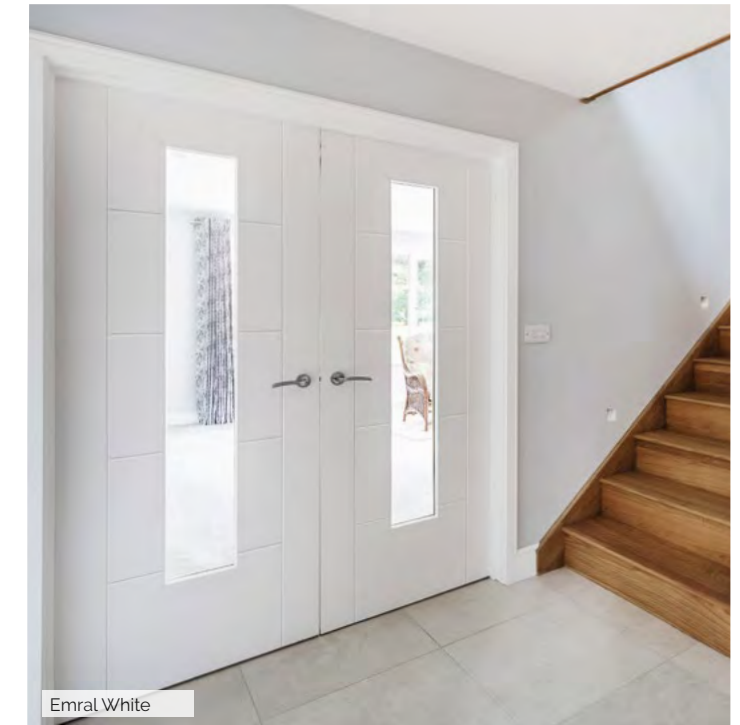
Tigris and Emral are available in Oak and Walnut, see pages 37 & 63.



Laminate versions are available in Light Grey, Dark Grey and Ivory, see pages 15 & 17.

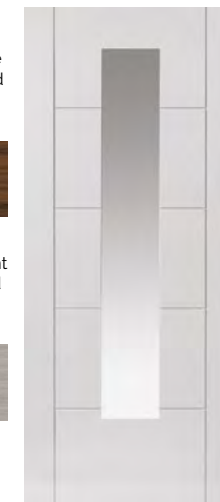


FINISHED		
Size (mm)		Code
1981 610 35		LTIG20
1981 686 35		LTIG23
1981 762 35		LTIG26
1981 838 35		LTIG29
1981 610 44		LTIG20FD30 
1981 686 44		LTIG23FD30 
1981 762 44		LTIG26FD30 
1981 838 44		LTIG29FD30 



Emral White

Emral White



Tigris White Bi-fold






Bi-folds are easy to install into existing flush linings (without door stop). Supplied ready hinged with pivots, brackets and a sliding track. Please note that the actual bi-fold supplied is slightly smaller than the door size listed, to accommodate tracking.



FINISHED		
Size (mm)		Code
1981 686 35		LEM23G
1981 762 35		LEM26G
1981 838 35		LEM29G

Glazed fire doors with raised beading available to order.

FINISHED		
Size (mm)		Code
1981 762 35		LTIGBF26

-  Bespoke options
-  View in our Door Visualiser
-  Option for PAS 24, see page 116



Mistral White

Make a statement with a pocket door system
see page 110

- Finish:**
White primed
- Style:**
3 ladder style panels, grooved into MDF
- Glazing:**
Clear flat safety glass with flush beading
- Construction:**
Standard core construction
- Other:**
🔥 FD30 Fire doors
All fire doors are solid core construction
FSC® Certified
Rebated door pairs can be ordered from stock (not bi-fold or fire doors) with a short lead time. Contact us for fire door options.



Mistral White



Mistral White is also available in Oak and Walnut, see pages 39 & 65.



PRIMED			
Size (mm)		Code	
1981 610 35		LMIS20	
1981 686 35		LMIS23	
1981 762 35		LMIS26	
1981 838 35		LMIS29	
2040 526 40		LMIS526	
2040 626 40		LMIS626	
2040 726 40		LMIS726	
2040 826 40		LMIS826	
1981 686 44		LMIS23FD30	🔥
1981 762 44		LMIS26FD30	🔥
1981 838 44		LMIS29FD30	🔥
2040 726 44		LMIS726FD30	🔥
2040 826 44		LMIS826FD30	🔥
2040 926 44		LMIS926FD30	🔥



Mistral White Glazed

Mistral White Glazed



Mistral White Bi-fold



Bi-folds are easy to install into existing flush linings (without door stop). Supplied ready hinged with pivots, brackets and a sliding track. Please note that the actual bi-fold supplied is slightly smaller than the door size listed, to accommodate tracking.



PRIMED			
Size (mm)		Code	
1981 686 35		LMIS23G	
1981 762 35		LMIS26G	
1981 838 35		LMIS29G	
2040 626 40		LMIS626G	
2040 726 40		LMIS726G	
2040 826 40		LMIS826G	

Glazed fire doors with raised beading available to order.

Add the finishing touch...
see page 106



- 🔧 Bespoke options
- 👁️ View in our Door Visualiser
- 🏠 Option for PAS 24, see page 116



Dominion



Elektra



Novello



Make a statement with a pocket door system see page 110

Finish:
 Adelphi/Dominion: white primed
 Elektra/Lyric/Novello: finished white

Style:
 MDF face with feature grooves

Glazing:
 Dominion: etched flat safety glass with clear rectangular pattern and raised beading

Construction:
 Standard core construction

Other:
 Certifire FD30 Fire doors
 FD30 Fire doors
 All fire doors are solid core construction
 FSC® Certified (Adelphi and Dominion only)
 Rebated door pairs can be ordered from stock (not bi-fold or fire doors) with a short lead time.

Adelphi



PRIMED	
Size (mm)	Code
1981 610 35	LADE20
1981 686 35	LADE23
1981 762 35	LADE26
1981 838 35	LADE29
1981 686 44	LADE23FD30
1981 762 44	LADE26FD30
1981 838 44	LADE29FD30

Adelphi Bi-fold



Bi-folds are easy to install into existing flush linings (without door stop). Supplied ready hinged with pivots, brackets and a sliding track. Please note that the actual bi-fold supplied is slightly smaller than the door size listed, to accommodate tracking.



PRIMED	
Size (mm)	Code
1981 762 35	LADEBF26

Dominion



PRIMED	
Size (mm)	Code
1981 686 35	LDOM23
1981 762 35	LDOM26
1981 838 35	LDOM29
1981 762 44	LDOM26FD30
1981 838 44	LDOM29FD30

Elektra



FINISHED	
Size (mm)	Code
1981 610 35	LELE20
1981 686 35	LELE23
1981 762 35	LELE26
1981 838 35	LELE29
1981 686 44	LELE23FD30
1981 762 44	LELE26FD30
1981 838 44	LELE29FD30

Lyric



FINISHED	
Size (mm)	Code
1981 610 35	LLYR20
1981 686 35	LLYR23
1981 762 35	LLYR26
1981 838 35	LLYR29
1981 686 44	LLYR23FD30
1981 762 44	LLYR26FD30
1981 838 44	LLYR29FD30

Novello



FINISHED	
Size (mm)	Code
1981 610 35	LNNOV20
1981 686 35	LNNOV23
1981 762 35	LNNOV26
1981 838 35	LNNOV29
1981 762 44	LNNOV26FD30
1981 838 44	LNNOV29FD30

Add the finishing touch... see page 106



Matching door pairs cannot be guaranteed
 Bespoke options



Belton (shown painted pale grey)

Make a statement with a pocket door system
see page 110

Finish

White primed

Style:

Flat panels with decorative flush mouldings

Glazing:

Clear flat safety glass

Belton Etched: inner etched panel with a clear perimeter

Construction:

Solid core construction

Other:

🔥 FD30 Fire doors

Rebated door pairs can be ordered from stock (not fire doors) with a short lead time.



Add the finishing touch...
see page 106



PRIMED	
Size (mm)	Code
1981 610 35	SBEL20
1981 686 35	SBEL23
1981 762 35	SBEL26
1981 838 35	SBEL29
1981 610 44	SBEL20FD30 🔥
1981 686 44	SBEL23FD30 🔥
1981 762 44	SBEL26FD30 🔥
1981 838 44	SBEL29FD30 🔥



PRIMED	
Size (mm)	Code
1981 610 35	SBEL1L20
1981 686 35	SBEL1L23
1981 762 35	SBEL1L26
1981 838 35	SBEL1L29



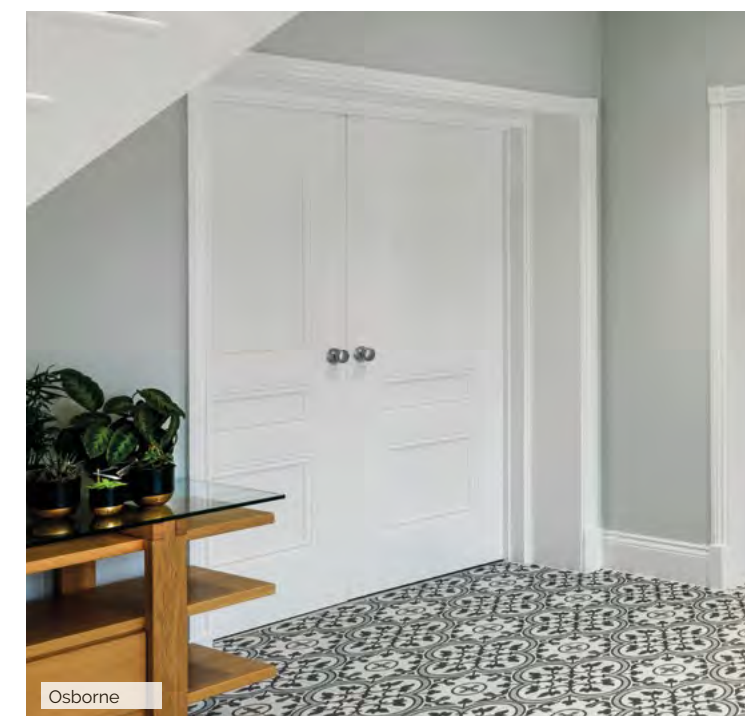
PRIMED	
Size (mm)	Code
1981 686 35	SBEL1ETC23
1981 762 35	SBEL1ETC26
1981 838 35	SBEL1ETC29

Osborne



PRIMED	
Size (mm)	Code
1981 610 35	SOSB20
1981 686 35	SOSB23
1981 762 35	SOSB26
1981 838 35	SOSB29
1981 610 44	SOSB20FD30 🔥
1981 686 44	SOSB23FD30 🔥
1981 762 44	SOSB26FD30 🔥
1981 838 44	SOSB29FD30 🔥

View in our Door Visualiser



Osborne



Finish

White primed

Style:

Flat panels with decorative flush mouldings

Glazing:

Clear flat safety glass

Construction:

Solid core construction

Other:

🔥 FD30 Fire doors

Rebated door pairs can be ordered from stock (not fire doors) with a short lead time.



Add the finishing touch...

see page 106



Hardwick



PRIMED

Size (mm)	Code
1981 610 35	SHAR20
1981 686 35	SHAR23
1981 762 35	SHAR26
1981 838 35	SHAR29
1981 610 44	SHAR20FD30 🔥
1981 686 44	SHAR23FD30 🔥
1981 762 44	SHAR26FD30 🔥
1981 838 44	SHAR29FD30 🔥



Hardwick

Catton



PRIMED

Size (mm)	Code
1981 610 35	SCAT20
1981 686 35	SCAT23
1981 762 35	SCAT26
1981 838 35	SCAT29
1981 610 44	SCAT20FD30 🔥
1981 686 44	SCAT23FD30 🔥
1981 762 44	SCAT26FD30 🔥
1981 838 44	SCAT29FD30 🔥

Catton Glazed



PRIMED

Size (mm)	Code
1981 610 35	SCAT3L20
1981 686 35	SCAT3L23
1981 762 35	SCAT3L26
1981 838 35	SCAT3L29

Make a statement with a pocket door system
see page 110

Catton



Axis White

Make a statement with a pocket door system
see page 110

- Finish:**
White primed
- Style:**
Wide shaker panel design
- Glazing:**
Clear flat safety glass
- Construction:**
Semi-solid core construction
Bi-folds: solid core construction
- Other:**
FSC® Certified
Rebated door pairs can be ordered from stock (not fire doors or bi-folds) with a short lead time.



Add the finishing touch...
see page 106



Axis White Bi-fold

Axis White



Axis White Glazed



Axis White Bi-fold



Axis White Glazed Bi-fold



Axis White is also available in Oak, see page 51.



PRIMED		
Size (mm)		Code
1981 610 35	SAXI20	
1981 686 35	SAXI23	
1981 762 35	SAXI26	
1981 838 35	SAXI29	



PRIMED		
Size (mm)		Code
1981 686 35	SAXI23G	
1981 762 35	SAXI26G	
1981 838 35	SAXI29G	

PRIMED		
Size (mm)		Code
1981 762 35	SAXIBF26	

PRIMED		
Size (mm)		Code
1981 762 35	SAXIBFG26	

Bi-folds are easy to install into existing flush linings (without door stop). Supplied ready hinged with pivots, brackets and a sliding track. Please note that the actual bi-fold supplied is slightly smaller than the door size listed, to accommodate tracking.

View in our Door Visualiser



Aurora Clear Glazed

Make a statement with a pocket door system
see page 110

Finish:
White primed

Style:
Aurora: retro sunshine door
Quartz: geometric hexagonal design

Glazing:
Aurora: clear or etched flat safety glass
Quartz: clear flat safety glass

Construction:
Solid core construction

Other:
FSC® Certified
Rebated door pairs can be ordered from stock with a short lead time
Aurora Etched Glazed is not suitable as a door pair.



Aurora



PRIMED			
Size (mm)		Code	
1981	686	35	CAUR23
1981	762	35	CAUR26
1981	838	35	CAUR29

Aurora Clear Glazed



PRIMED			
Size (mm)		Code	
1981	610	35	CAUR20G
1981	686	35	CAUR23G
1981	762	35	CAUR26G

Aurora Etched Glazed



PRIMED			
Size (mm)		Code	
1981	686	35	CAUR23ETCG
1981	762	35	CAUR26ETCG

Add the finishing touch...
see page 106



View in our Door Visualiser



Quartz Glazed

Quartz



PRIMED			
Size (mm)		Code	
1981	686	35	CQTZ23
1981	762	35	CQTZ26
1981	838	35	CQTZ29

Quartz Glazed



PRIMED			
Size (mm)		Code	
1981	686	35	CQTZ23G
1981	762	35	CQTZ26G



Rushmore White



Make a statement with a pocket door system
see page 110

Antigua



Finish:
White primed

Style:
Recessed flat panels

Glazing:
Clear flat safety glass

Construction:
Solid core construction

Other:
🔥 FD30 Fire doors
FSC® Certified

Rebated door pairs can be ordered from stock (not fire doors or bi-folds) with a short lead time.

Add the finishing touch...
see page 106




All these doors are also available in Oak, see pages 51-53.



PRIMED			
Size (mm)		Code	
1981	610	35	CRUS20
1981	686	35	CRUS23
1981	762	35	CRUS26
1981	838	35	CRUS29
1981	686	44	CRUS23FD30 🔥
1981	762	44	CRUS26FD30 🔥
1981	838	44	CRUS29FD30 🔥

Rushmore White



Rushmore White Glazed



PRIMED			
Size (mm)		Code	
1981	762	35	CRUSTL26

Antigua



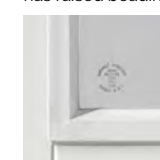
PRIMED			
Size (mm)		Code	
1981	610	35	CANTI20
1981	686	35	CANTI23
1981	762	35	CANTI26
1981	838	35	CANTI29
1981	686	44	CANTI23FD30 🔥
1981	762	44	CANTI26FD30 🔥
1981	838	44	CANTI29FD30 🔥

Tobago

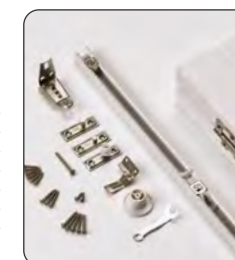


PRIMED			
Size (mm)		Code	
1981	686	35	CTOB23
1981	762	35	CTOB26
1981	838	35	CTOB29
1981	762	44	CTOB26FD30 🔥
1981	838	44	CTOB29FD30 🔥

Tobago FD30 fire door has raised beading



Bi-folds are easy to install into existing flush linings (without door stop). Supplied ready hinged with pivots, brackets and a sliding track. Please note that the actual bi-fold supplied is slightly smaller than the door size listed, to accommodate tracking.



Antigua Bi-fold



PRIMED			
Size (mm)		Code	
1981	762	35	CANTIBF26

Tobago Bi-fold



PRIMED			
Size (mm)		Code	
1981	762	35	CTOBBF26

View in our Door Visualiser



Make a statement with a pocket door system see page 110

Jamaica

Montserrat

Geo Glazed

- Finish:** White primed
 - Style:** Recessed flat panels
Jamaica/Trinidad: include decorative muntins
 - Glazing:** Clear flat safety glass
 - Construction:** Solid core construction
Geo: semi-solid core construction
 - Other:**
 - 🔥 FD30 Fire doors
 - FSC® Certified
- Rebated door pairs can be ordered from stock (not fire doors or bi-folds) with a short lead time.

Jamaica



PRIMED	
Size (mm)	Code
1981 610 35	CJAM20
1981 686 35	CJAM23
1981 762 35	CJAM26
1981 838 35	CJAM29
1981 686 44	CJAM23FD30 🔥
1981 762 44	CJAM26FD30 🔥
1981 838 44	CJAM29FD30 🔥

Trinidad



PRIMED	
Size (mm)	Code
1981 686 35	CTRI23
1981 762 35	CTRI26
1981 838 35	CTRI29

Montserrat



PRIMED	
Size (mm)	Code
1981 610 35	CMON20
1981 686 35	CMON23
1981 762 35	CMON26
1981 838 35	CMON29
1981 610 44	CMON20FD30 🔥
1981 686 44	CMON23FD30 🔥
1981 762 44	CMON26FD30 🔥
1981 838 44	CMON29FD30 🔥

Cayman



PRIMED	
Size (mm)	Code
1981 686 35	CCAY23
1981 762 35	CCAY26
1981 838 35	CCAY29

Montserrat Bi-fold



PRIMED	
Size (mm)	Code
1981 762 35	CMONBF26

Cayman Bi-fold



PRIMED	
Size (mm)	Code
1981 762 35	CCAYBF26

Geo



PRIMED	
Size (mm)	Code
1981 610 35	SGEO20
1981 686 35	SGEO23
1981 762 35	SGEO26
1981 838 35	SGEO29

Geo Glazed



PRIMED	
Size (mm)	Code
1981 686 35	SGEO23G
1981 762 35	SGEO26G
1981 838 35	SGEO29G

Bi-folds are easy to install into existing flush linings (without door stop). Supplied ready hinged with pivots, brackets and a sliding track. Please note that the actual bi-fold supplied is slightly smaller than the door size listed, to accommodate tracking.



Add the finishing touch... see page 106



Jamaica, Trinidad, Montserrat and Cayman are also available in Oak, see Eden, Darwin, Snowdon & Nevis on pages 51 & 57.



View in our Door Visualiser



Make a statement with a pocket door system see page 110

4 Line Horizontal Glazed

IMPORTANT: Moulded panel doors are vulnerable to high humidity. Make sure plasterwork etc. has been allowed to dry out sufficiently before storing or fitting the doors in new or refurbished homes.

Finish:
Cottage: white primed, grained effect
Quattro/4 Line Horizontal: white primed, smooth effect

Style:
Moulded panel

Glazing:
Clear flat safety glass with flush beading
Cottage 1 Light: vertical etched lines

Construction:
Standard core construction

Other:
🔥 FD30 Fire doors
All fire doors are semi-solid core construction
FSC® Certified

Add the finishing touch... see page 106



4 Line Horizontal



M

PRIMED SMOOTH	
Size (mm)	Code
1981 610 35	PAT20
1981 686 35	PAT23
1981 762 35	PAT26
1981 838 35	PAT29
1981 610 44	PAT20FD30 🔥
1981 686 44	PAT23FD30 🔥
1981 762 44	PAT26FD30 🔥
1981 838 44	PAT29FD30 🔥

4 Line Horizontal Glazed



M

PRIMED SMOOTH	
Size (mm)	Code
1981 762 35	PAT26G

M Matching door pairs cannot be guaranteed
🔥 Option for PAS 24, see page 116

Cottage 5



🔥

PRIMED GRAINED	
Size (mm)	Code
1981 610 35	MCOT520
1981 686 35	MCOT523
1981 762 35	MCOT526
1981 838 35	MCOT529
1981 610 44	MCOT520FD30 🔥
1981 686 44	MCOT523FD30 🔥
1981 762 44	MCOT526FD30 🔥
1981 838 44	MCOT529FD30 🔥

Cottage 1 Light



🔥

PRIMED GRAINED	
Size (mm)	Code
1981 610 35	MCOT51L20
1981 686 35	MCOT51L23
1981 762 35	MCOT51L26
1981 838 35	MCOT51L29

Quattro



🔥

PRIMED SMOOTH	
Size (mm)	Code
1981 610 35	QUA20
1981 686 35	QUA23
1981 711 35	QUA24
1981 762 35	QUA26
1981 838 35	QUA29
1981 610 44	QUA20FD30 🔥
1981 686 44	QUA23FD30 🔥
1981 762 44	QUA26FD30 🔥
1981 838 44	QUA29FD30 🔥

Quattro Glazed



🔥

PRIMED SMOOTH	
Size (mm)	Code
1981 686 35	QUA4L23
1981 762 35	QUA4L26
1981 838 35	QUA4L29



Canterbury (grained)

Finish

White primed grained and smooth effect

Style:

Moulded panel

Glazing:

Andorra: etched with clear rectangular pattern

Canterbury 2 Light & Bi-fold:

Grained: etched flat safety glass with clear diamond pattern lines and flush beading

Smooth: clear flat safety glass with flush beading

Canterbury 2 Light FD30: Clear flat fire glass with raised beading

Construction:

Standard core construction

Other:

🔥 FD30 Fire doors

All fire doors are semi-solid core construction apart from Canterbury 2 Light FD30 which is solid

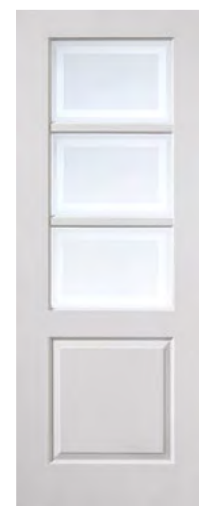
FSC® Certified

PRIMED GRAINED		
Size (mm)		Code
1981 610 35		CAP20
1981 686 35		CAP23
1981 762 35		CAP26
1981 838 35		CAP29
2040 726 40		CAP726
2040 826 40		CAP826
1981 610 44		CAP20FD30 🔥
1981 686 44		CAP23FD30 🔥
1981 762 44		CAP26FD30 🔥
1981 838 44		CAP29FD30 🔥
2040 726 44		CAP726FD30 🔥
2040 826 44		CAP826FD30 🔥
2040 926 44		CAP926FD30 🔥

Caprice



Andorra



PRIMED GRAINED		
Size (mm)		Code
1981 686 35		CAPAND23
1981 762 35		CAPAND26
1981 838 35		CAPAND29

Canterbury



Canterbury 2 panel



PRIMED GRAINED 2 PANEL		
Size (mm)		Code
1981 457 35		CAN16
1981 533 35		CAN19
2040 526 40		CAN526

Canterbury 2 Light FD30



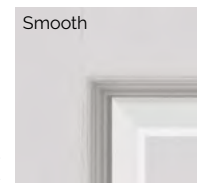
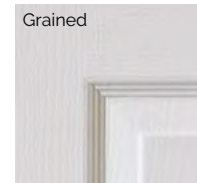
PRIMED GRAINED		
Size (mm)		Code
1981 762 44		CANGL26FD30 🔥
1981 838 44		CANGL29FD30 🔥

Canterbury 2 Light



PRIMED GRAINED ETCHED GLASS		
Size (mm)		Code
1981 686 35		CANGL23
1981 762 35		CANGL26
1981 838 35		CANGL29
2032 813 35		CANGL28
2040 726 40		CANGL726

2 Light: Smooth with clear glass



PRIMED SMOOTH		
Size (mm)		Code
1981 610 35		SMCAN20
1981 686 35		SMCAN23
1981 762 35		SMCAN26
1981 838 35		SMCAN29
1981 610 44		SMCANHH20 🔥
1981 686 44		SMCANHH23 🔥
1981 762 44		SMCANHH26 🔥
1981 838 44		SMCANHH29 🔥
2032 813 44		SMCANHH28 🔥
2040 726 44		SMCANHH726 🔥
2040 826 44		SMCANHH826 🔥
2040 926 44		SMCANHH926 🔥

Add the finishing touch... see page 106



Canterbury Bi-fold



PRIMED GRAINED		
Size (mm)		Code
1981 610 35		CANBF20
1981 762 35		CANBF26

Canterbury Glazed Bi-fold



PRIMED GRAINED		
Size (mm)		Code
1981 762 35		CANBFGLT26



Bi-folds are easy to install into existing flush linings (without door stop). Supplied ready hinged with pivots, brackets and a sliding track. Please note that the actual bi-fold supplied is slightly smaller than the door size listed, to accommodate tracking.

IMPORTANT: Moulded panel doors are vulnerable to high humidity. Make sure plasterwork etc. has been allowed to dry out sufficiently before storing or fitting the doors in new or refurbished homes.



IMPORTANT:
Moulded panel doors are vulnerable to high humidity. Make sure plasterwork etc. has been allowed to dry out sufficiently before storing or fitting the doors in new or refurbished homes.

Faro

- Finish:**
White primed grained and smooth effect
- Style:**
Moulded panel
- Glazing:**
Faro: clear flat safety glass with flush beading
Decima: clear bevelled safety glass with brushed chrome camings and raised perimeter beading
Classique: clear flat safety glass with flush beading
- Construction:**
Standard core construction
- Other:**
🔥 FD30 Fire doors
All fire doors are semi-solid core construction, apart from Faro which is solid
FSC® Certified
Classique 6 Light Pairs: rebated meeting stiles, right hand open away

Faro FD30 has clear flat fire glass with etched lines and raised perimeter beading.



Add the finishing touch...
see page 106



Faro



PRIMED GRAINED	
Size (mm)	Code
1981 686 35	CAPFAR23
1981 762 35	CAPFAR26
1981 838 35	CAPFAR29
1981 762 44	CAPFAR26FD30 🔥
1981 838 44	CAPFAR29FD30 🔥

Decima



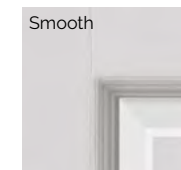
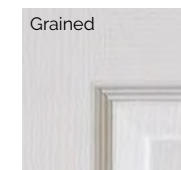
PRIMED GRAINED	
Size (mm)	Code
1981 686 35	CCAPDEC23
1981 762 35	CCAPDEC26
1981 838 35	CCAPDEC29

Colonist



PRIMED GRAINED	
Size (mm)	Code
1981 610 35	COL20
1981 686 35	COL23
1981 711 35	COL24
1981 762 35	COL26
1981 838 35	COL29
2032 813 35	COL28
2040 626 40	COL626
2040 726 40	COL726
2040 826 40	COL826
1981 610 44	COLHH20 🔥
1981 686 44	COLHH23 🔥
1981 762 44	COLHH26 🔥
1981 838 44	COLHH29 🔥
2032 813 44	COLHH28 🔥
2040 726 44	COLHH726 🔥
2040 826 44	COLHH826 🔥
2040 926 44	COLHH926 🔥

PRIMED SMOOTH	
Size (mm)	Code
1981 610 35	SMCOL20
1981 686 35	SMCOL23
1981 762 35	SMCOL26
1981 838 35	SMCOL29
2032 813 35	SMCOL28
1981 686 44	SMCOLHH23 🔥
1981 762 44	SMCOLHH26 🔥
1981 838 44	SMCOLHH29 🔥
2032 813 44	SMCOLHH28 🔥



Colonist 3 panel



PRIMED GRAINED 3 PANEL	
Size (mm)	Code
1981 457 35	COL16
1981 533 35	COL19
2040 526 40	COL526

PRIMED SMOOTH 3 PANEL	
Size (mm)	Code
1981 457 35	SMCOL16
1981 533 35	SMCOL19

Classique



PRIMED GRAINED	
Size (mm)	Code
1981 533 35	CLA19
1981 610 35	CLA20
1981 686 35	CLA23
1981 711 35	CLA24
1981 762 35	CLA26
1981 838 35	CLA29
2032 813 35	CLA28
2040 726 40	CLA726
2040 826 40	CLA826
1981 686 44	CLAHH23 🔥
1981 762 44	CLAHH26 🔥
1981 838 44	CLAHH29 🔥

Classique 6 Light



PRIMED GRAINED	
Size (mm)	Code
1981 686 35	CLAGLS23
1981 762 35	CLAGLS26
1981 838 35	CLAGLS29
2032 813 35	CLAGLS28

Classique Bi-fold



PRIMED GRAINED	
Size (mm)	Code
1981 610 35	CLABF20
1981 762 35	CLABF26

Colonist Bi-fold



PRIMED GRAINED	
Size (mm)	Code
1981 762 35	COLBF26
1981 914 35	COLBF30

Classique 6 Light Pairs



PRIMED GRAINED	
Size (mm)	Code
1981 1220 35	CLAGLSPR40

Bi-folds are easy to install into existing flush linings (without door stop). Supplied ready hinged with pivots, brackets and a sliding track. Please note that the actual bi-fold supplied is slightly smaller than the door size listed, to accommodate tracking.



VENEERED FLUSH

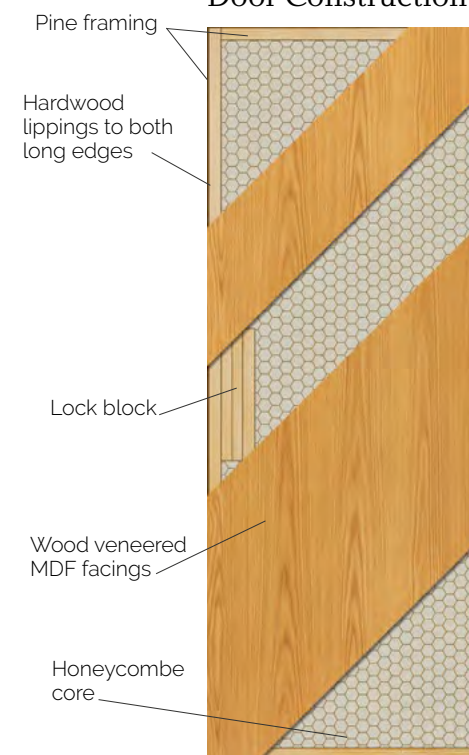
Flexible door solutions for commercial and residential environments.



What makes our Veneered Flush range great value?

Constructed with a full timber frame (unlike alternatives on the market) both our standard and FD30 veneered flush doors are manufactured to a higher standard, plus they are priced more competitively.

Veneered Flush Standard Door Construction



Veneered Flush FD30 Fire Door Construction

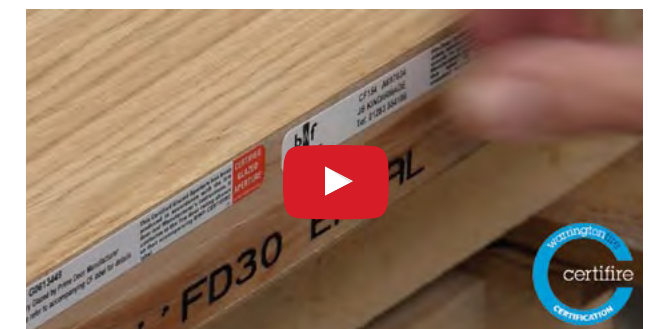


Option for PAS 24 fire resistant flat entrance door sets, see pages 116-117

Bespoke options:

FD30 glazing service, special sizes and alternative veneers are available to order.

See our in-house FD30 Door Glazing video at www.youtube.com/c/JBKindLtd





Finish:

Fully finished real wood veneers

Style:

Flush with a vertical grain

Glazing:

FD30 Glazing Service

Construction:

Standard core (solid core for FD30)

Full timber framed construction

Other:

Certifire FD30 Fire doors



Option for PAS 24 fire resistant flat entrance door sets, see pages 116-117

Oak



FINISHED

Size (mm)	Code
1981 x 610 x 35	MOAK201
1981 x 686 x 35	MOAK231
1981 x 762 x 35	MOAK261
1981 x 838 x 35	MOAK291
2040 x 726 x 40	MOAK726
2040 x 826 x 40	MOAK826
1981 x 610 x 44	KOAK202
1981 x 686 x 44	KOAK232
1981 x 762 x 44	KOAK262
1981 x 838 x 44	KOAK292
1981 x 915 x 44	KOAK302
2032 x 813 x 44	KOAK282
2040 x 626 x 44	KOAK626
2040 x 726 x 44	KOAK726
2040 x 826 x 44	KOAK826
2040 x 926 x 44	KOAK926

Ash



FINISHED

Size (mm)	Code
1981 x 533 x 35	MASH191
1981 x 610 x 35	MASH201
1981 x 686 x 35	MASH231
1981 x 762 x 35	MASH261
1981 x 838 x 35	MASH291
1981 x 610 x 44	KASH202
1981 x 686 x 44	KASH232
1981 x 762 x 44	KASH262
1981 x 838 x 44	KASH292
1981 x 915 x 44	KASH302
2032 x 813 x 44	KASH282
2040 x 726 x 44	KASH726
2040 x 826 x 44	KASH826
2040 x 926 x 44	KASH926

Walnut



FINISHED

Size (mm)	Code
1981 x 610 x 35	MWAL201
1981 x 686 x 35	MWAL231
1981 x 762 x 35	MWAL261
1981 x 838 x 35	MWAL291
1981 x 686 x 44	KWAL232
1981 x 762 x 44	KWAL262
1981 x 838 x 44	KWAL292

Beech



FINISHED

Size (mm)	Code
1981 x 686 x 44	KBEE232
1981 x 762 x 44	KBEE262
1981 x 838 x 44	KBEE292
2040 x 826 x 44	KBEE826
2040 x 926 x 44	KBEE926

Sapele



FINISHED

Size (mm)	Code
1981 x 381 x 35	MSAP131
1981 x 457 x 35	MSAP161
1981 x 533 x 35	MSAP191
1981 x 610 x 35	MSAP201
1981 x 686 x 35	MSAP231
1981 x 711 x 35	MSAP241
1981 x 762 x 35	MSAP261
1981 x 838 x 35	MSAP291
1981 x 915 x 35	MSAP301
2032 x 813 x 35	MSAP281
2040 x 726 x 40	MSAP726
2040 x 826 x 40	MSAP826
2040 x 926 x 40	MSAP926
1981 x 610 x 44	KSAP202
1981 x 686 x 44	KSAP232
1981 x 762 x 44	KSAP262
1981 x 838 x 44	KSAP292
1981 x 915 x 44	KSAP302
2032 x 813 x 44	KSAP282
2040 x 726 x 44	KSAP726
2040 x 826 x 44	KSAP826
2040 x 926 x 44	KSAP926

Bespoke options

Option for PAS 24, see page 116

INTERNAL FLUSH FOR PAINT

Finish:

Unfinished ready for painting

Style:

Flush paint grade

Glazing:

FD30 Glazing Service

Glazed Openings: FD30 wired glass (clear fire glass available to order)

Construction:

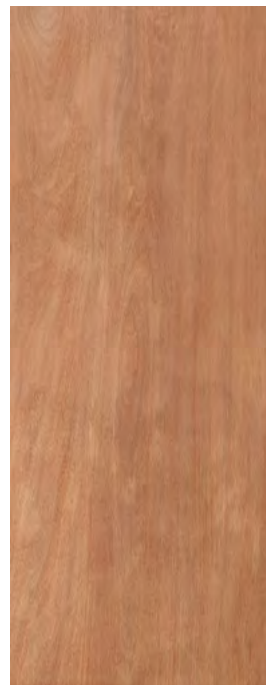
Standard core (solid/tube core for FD30)

Other:

 Certifire FD30 Fire doors



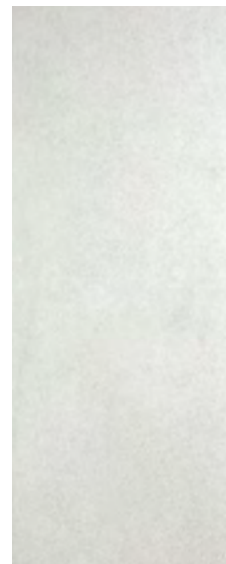
Paint Grade Flush
Trade Value Plus+



UNFINISHED

Size (mm)	Code	Size (mm)	Code
1981 x 381 x 35	NPLY131	1981 x 457 x 44	KINT162
1981 x 457 x 35	NPLY161	1981 x 533 x 44	KINT192
1981 x 533 x 35	NPLY191	1981 x 610 x 44	KINT202
1981 x 610 x 35	NPLY201	1981 x 686 x 44	KINT232
1981 x 686 x 35	NPLY231	1981 x 711 x 44	KINT242
1981 x 711 x 35	NPLY241	1981 x 762 x 44	KINT262
1981 x 762 x 35	NPLY261	1981 x 838 x 44	KINT292
1981 x 838 x 35	NPLY291	1981 x 915 x 44	KINT302
1981 x 915 x 35	NPLY301	2032 x 813 x 44	KINT282
2032 x 813 x 35	NPLY281	2040 x 526 x 44	KINT526
2040 x 526 x 40	NPLY526	2040 x 626 x 44	KINT626
2040 x 626 x 40	NPLY626	2040 x 726 x 44	KINT726
2040 x 726 x 40	NPLY726	2040 x 826 x 44	KINT826
2040 x 826 x 40	NPLY826	2040 x 926 x 44	KINT926
2040 x 926 x 40	NPLY926		

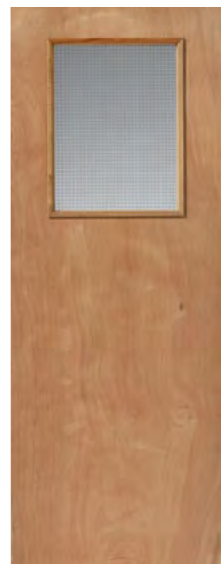
White Primed
Interior Hardboard
Flush



PRIMED

Size (mm)	Code
1981 x 457 x 35	NWPD161
1981 x 533 x 35	NWPD191
1981 x 610 x 35	NWPD201
1981 x 686 x 35	NWPD231
1981 x 711 x 35	NWPD241
1981 x 762 x 35	NWPD261
1981 x 838 x 35	NWPD291
2032 x 813 x 35	NWPD281
1981 x 686 x 44	KWPD232
1981 x 762 x 44	KWPD262
1981 x 838 x 44	KWPD292

Paint Grade Flush
Interior FD30
1 Glazed Opening



UNFINISHED



Size (mm)	Code
1981 x 762 x 44	KIGOG26
1981 x 838 x 44	KIGOG29
2032 x 813 x 44	KIGOG28

Paint Grade Flush
Interior FD30
2 Glazed Openings



UNFINISHED

Size (mm)	Code
1981 x 762 x 44	KINTT6G26
1981 x 838 x 44	KINTT6G29
2040 x 926 x 44	KINTT6G926

 Bespoke options
 Option for PAS 24, see page 116



Option for PAS 24
fire resistant flat
entrance door sets,
see pages 116-117



FD30 GLAZING SERVICE



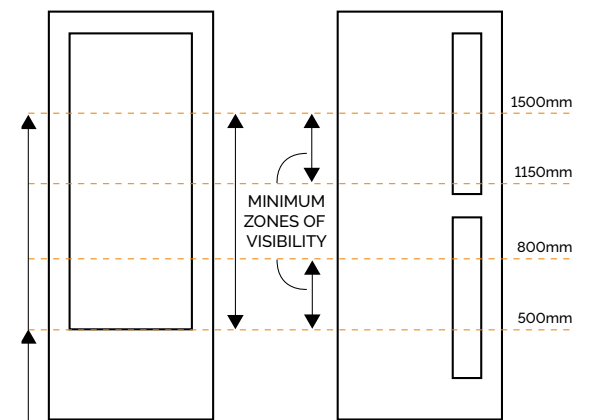
Please check
current building
regulations

Glazed FD30 & Part M (mobility) compliant options

Any of our Warringtonfire Certifire certificated flush door designs can be adapted into an apertured fire door. Our in-house service is prompt and economical, guaranteeing correct assembly. Flush doors with FD30 apertures must be supplied ready glazed to comply with our Certifire certification. Aperture cutting by a third party may invalidate the original door certification.

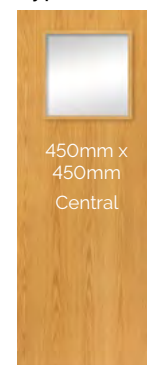
Part M Mobility

Building Regulations Part M dictates the requirements for glazed doors in specific locations. The diagram offers general guidance but for specific information, please check the Building Regulations.



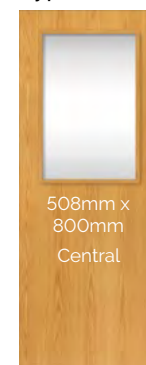
Do you need FD30 glazing?
Call us for details on Tel: **01283 554197**

Type 1G



More aperture dimensions are available,
please contact us with your requirements.

Type 8G



Type 11G



Type 12G



Type 20G



Type 30G



DOOR HANDLE PACKS

Choose a style to suit your doors and interior



Everything you need in one box

Our handle packs are available in a variety of finishes and styles – from knurled black, smooth light and dark grey satin, to contemporary chrome and stainless steel – providing an affordable and quality range of designs.



New designs for 2024

What's in the box?

All of our handle packs come with a pair of lever handles and three quality ball bearing hinges. Standard latch packs include a mortice latch and strike plate. Privacy latch packs come with a privacy latch, bathroom turn and release and strike plate.

Standard latch pack



Privacy latch pack

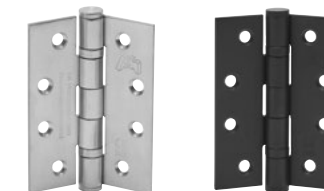


Please note: Black door handles are supplied with matching black hinges and face plates.

Fire door hinges

The hinges supplied in our latch packs are not suitable for use with fire doors.

Satin stainless steel fire hinges x 3 **SSBHFD30**
 Matt black fire hinges x 3 **MBBHFD30**



NEW Arlington Black

Knurled matt black



Standard latch pack **IARLLPMB**
Privacy latch pack **IARLPPMB**

NEW Arlington Satin

Knurled satin stainless steel



Standard latch pack **IARLLPSS**
Privacy latch pack **IARLPPSS**

Boston

Satin and polished chrome



Standard latch pack **IBOSLP**
Privacy latch pack **IBOSPP**

Dallas

Satin and polished chrome



Standard latch pack **IDALLP**
Privacy latch pack **IDALPP**

Phoenix Black

Black powder coated soft touch



Standard latch pack **IPHOBBLACKLP**
Privacy latch pack **IPHOBBLACKPP**

Phoenix Satin

Satin stainless steel



Standard latch pack **IPHOSTEELLP**
Privacy latch pack **IPHOSTEELPP**

Portland

Satin and polished stainless steel



Standard latch pack **IPORLP**
Privacy latch pack **IPORPP**

Seattle

Satin and polished chrome



Standard latch pack **ISEALP**
Privacy latch pack **ISEAPP**

Raven Black

Matt black



Standard latch pack **RAVLP**
Privacy latch pack **RAVPP**

Raven Polished

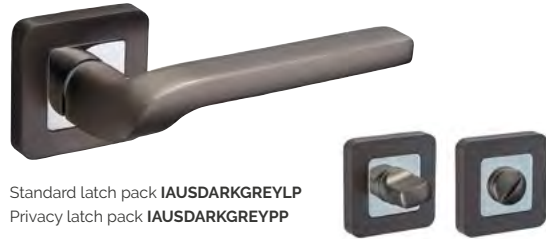
Polished stainless steel



Standard latch pack **RAVPSLP**
Privacy latch pack **RAVPSPP**

Austin Dark Grey

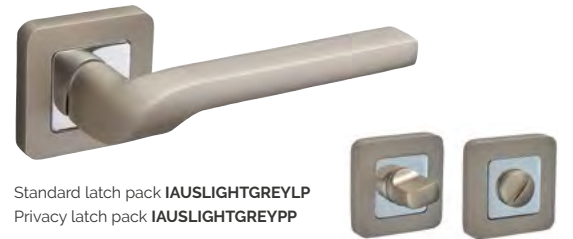
Satin dark grey with polished chrome



Standard latch pack **IAUSDARKGREYLP**
Privacy latch pack **IAUSDARKGREYPP**

Austin Light Grey

Satin light grey with polished chrome



Standard latch pack **IAUSLIGHTGREYLP**
Privacy latch pack **IAUSLIGHTGREYPP**

NEW Atlanta

Satin and polished chrome



Standard latch pack **IATLLP**
Privacy latch pack **IATLPP**

NEW Detroit

Satin stainless steel



Standard latch pack **IDETLP**
Privacy latch pack **IDETPP**

Denver Dark Grey

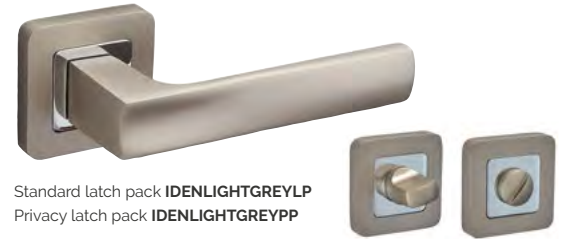
Satin dark grey with polished chrome



Standard latch pack **IDENDARKGREYLP**
Privacy latch pack **IDENDARKGREYPP**

Denver Light Grey

Satin light grey with polished chrome



Standard latch pack **IDENLIGHTGREYLP**
Privacy latch pack **IDENLIGHTGREYPP**

NEW Miami

Satin and polished chrome



Standard latch pack **IMIALP**
Privacy latch pack **IMIAPP**

Houston Dark Grey

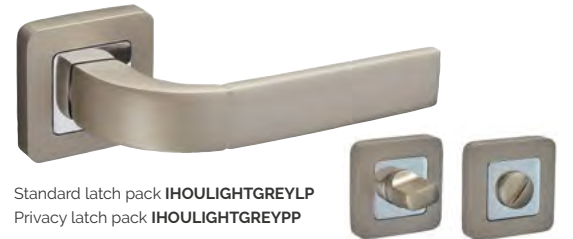
Satin dark grey with polished chrome



Standard latch pack **IHOUDARKGREYLP**
Privacy latch pack **IHOUDARKGREYPP**

Houston Light Grey

Satin light grey with polished chrome



Standard latch pack **IHOULIGHTGREYLP**
Privacy latch pack **IHOULIGHTGREYPP**

10 Year Guarantee

There's a 10 year parts and mechanism guarantee with all our handle packs.

POCKET DOOR SYSTEMS

Clever, space saving solutions that are easy to install



A pocket door system that enables doors to slide conveniently into a wall cavity and save space whilst looking incredibly stylish.

Key features:

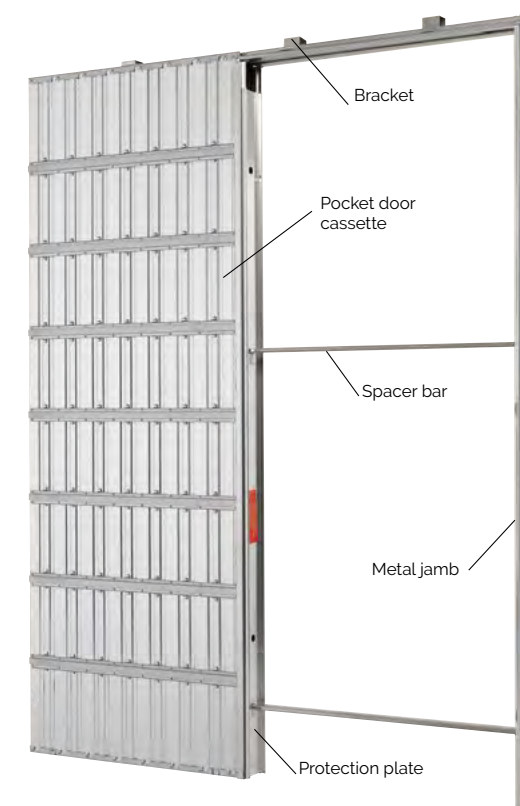
- Easy to install* rigid frame, supplied pre-assembled.
- Fitted in half the time of other brands.
- Designed for stud and plasterboard.
- Door is fitted after all installation and decoration has been completed, avoiding any potential damage to the door.
- Door choice can be changed in the future without structural alteration to the wall.
- Gives a finished wall thickness of 125mm.
- Suits door thickness 35mm.
- Maximum door weight 80Kg.
- Compatible sliding door hardware available.
- Available in single and double format.

*We always recommend using a professional fitter.



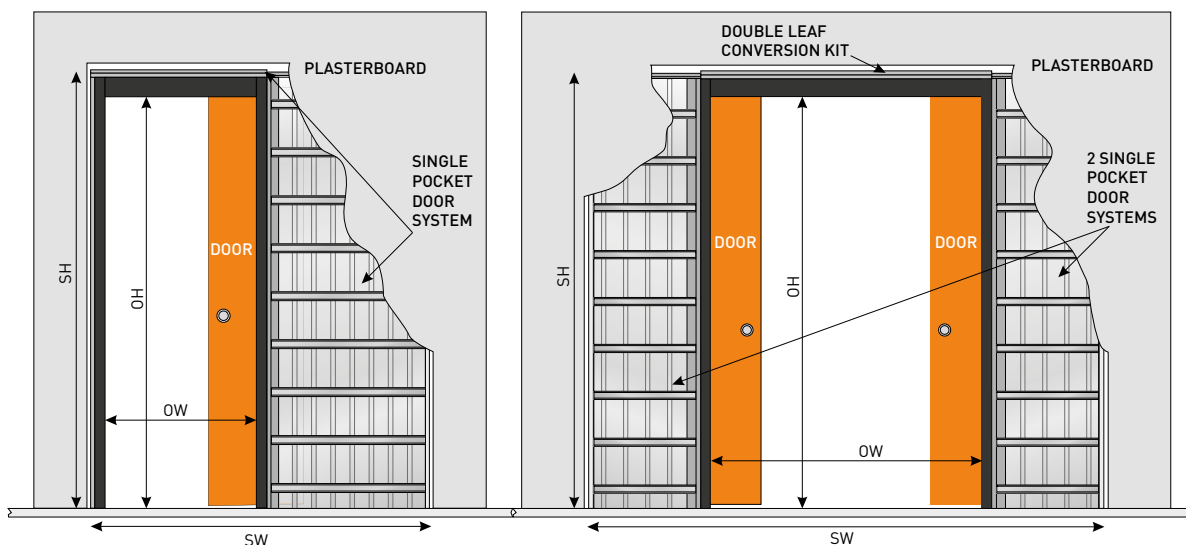
Pocket door cassette:

The cassette structure is made from galvanised steel, with the sides formed from single pieces of pressed steel which is corrugated for complete stability. Transverse ribs fixed to the corrugations further re-enforce the structure and allow fixing of plasterboard direct to the cassette. The internal pocket cavity is protected by a cover during installation. Spacer bars are fixed between the cassette and jamb during installation to ensure the structure remains square.



Single Pocket Door

Double Pocket Door



Single and Double Pocket Door – Size Guide

Door Size (individual)	Clear Opening Size (walkthrough area)			Structural Opening Size of the Unit			Finished Wall Thickness	
	Single	Double		Single	Double			
Width mm	Width (OW)	Width (OW)	Height (OH)	Width (SW)	Width (SW)	Height (SH)	mm	
686	1981	650	1300	1970	1425	2742	2075	125
762	1981	740	1500	1970	1625	3142	2075	125
838	1981	800	1600	1970	1725	3342	2075	125
915	1981	890	1800	1970	1925	3742	2075	125

Single Pocket Door System

Code (mm)	Door Size	Door Size
	Width	Height
POCSYSSGL686	686	1981
POCSYSSGL762	762	1981
POCSYSSGL838	838	1981
POCSYSSGL915	915	1981

Double Pocket Door Conversion Kit*

Code (mm)	Door Size	Door Size
	Width	Height
DBLLEAFKIT686	686	1981
DBLLEAFKIT762	762	1981
DBLLEAFKIT838	838	1981
DBLLEAFKIT915	915	1981

IMPORTANT INFORMATION: *For a double pocket door you will need to purchase two single pocket door systems and a double leaf conversion kit. eg. 2 x POCSYSSGL686 and 1 x DBLLEAFKIT686

How to order a Pocket Door System: Your step by step guide

Step 1 Single or Double Pocket Door System

Use our size guide tables to check your requirements. For a double pocket door, you will need to purchase two single pocket door systems and a double leaf conversion kit.

Step 2 Choose your door design

Most of our door designs are suitable for use as pocket doors. However, doors that have raised mouldings and 44mm fire doors are not suitable. Please get in touch if in doubt.

Step 3 Timber accessory kits

The pocket door system cannot be installed without an accessory kit. Choose from either white primed

or varnished oak, available in both single and double kits.

Step 4 Door Grooving

The bottom edge of the door will need to be grooved to fit in the floor guide of a pocket system.

If required, our in-house joinery workshop can pre-groove your doors prior to delivery, for a small charge.

Step 5 Optional accessories

Automatic Door Closer: is a self-closing system that enables the door to glide into place automatically after being opened.

Soft-close damper unit: applies a brake making sure that the door moves slowly and smoothly to a close.

Step 6 Door furniture

Choose from either a bathroom privacy lock or flush door pull.

Step 7 Finding a JB Kind door supplier

Take a look at the Where to Buy section on our website for details of our suppliers.

Once you've chosen a place to purchase from, then just hand over all of your requirements and your doors and pocket systems should be with you in no time!

If you do have any questions, our expert JB Kind team is on hand to help you out, just call **01283 554197** or email info@jbkind.com

Pocket Door System Accessories



Flush Door Pull Pack

Includes: 2 circular flush pulls and a round finger pull for the door edge

Code	Finish
CIRCPULL	satin stainless steel
MBCIRCPULL	matt black



Flush Bathroom Door Pack

Includes: turn and release, flush latch, adjustable keep (not shown) and finger pull

Code	Finish
CIRCATHLOCK	satin stainless steel
MBCIRCATHLOCK	matt black

Timber Accessory Kits

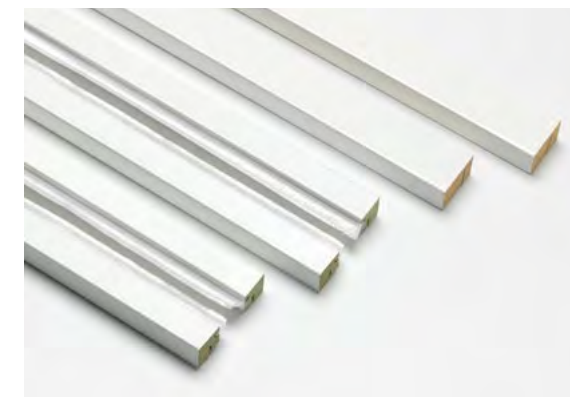
Available in either white primed or varnished oak. Accessory Kits are required to complete pocket door installation.



Single pocket door kit (shown in oak)

Includes: 2 x cover moulds with brush seals, header cover and jamb with seals

Code	Oak Varnished
SGLVOAC	single pocket door kit
DBLVOAC	double pocket door kit



Double pocket door kit (shown as white primed)

Includes: 4 x cover moulds with brush seals and 2 x header covers

Code	White Primed
SGLWPRIAC	single pocket door kit
DBLWPRIAC	double pocket door kit


OUR SERVICES

Need to know more about any of our services or wish to order? Call 01283 554197 or email info@jbkind.com



Bespoke Options

Whether you're self-building, renovating your home, purchasing for a development project or you're an interior design expert, you'll want to take a look at JB Kind's bespoke options. The versatility of our bespoke service is ideal for those special requirements.

Many of our door designs have bespoke options available. Look out for the  icon adjacent to product images.

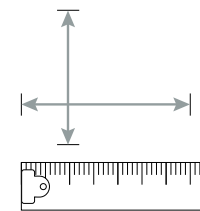
Make your mark

Perhaps you love one of the designs from our Door Collection but would prefer it in a different timber veneer or painted finish, or maybe you would like to create a style that is completely unique and different?



Rebated door pairs

A number of door designs held within our stock ranges are suitable for rebating with a short lead time, through our in-house joinery workshop. Please refer to individual product pages.



Made to measure

There are a wide range of standard door sizes available, however, sometimes you just cannot avoid an awkwardly sized door opening. Many of the doors from our collection can be produced to order as a special size.



Bespoke glazing

Whether you prefer a full glazed panel or smaller apertures, there are so many options for a glazed door. Clear, bevelled, diamond cut and etched are some of the most popular glazing types. Let us know what you would like to achieve and we'll advise on the options.



Fire doors

JB Kind can supply bespoke fire doors, in a wide range of solid and glazed options. Supported by the appropriate accreditations, you can be safe and stylish.

PAS 24 Security Doorsets

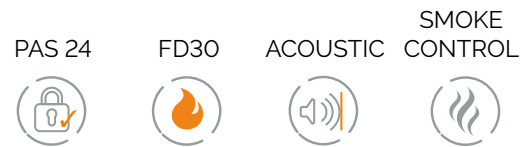
Fully compliant PAS 24 fire resistant flat entrance door sets

We hold our own PAS 24 Enhanced Security and Certifire certification, having developed and tested a fully compliant door leaf. You can be assured that your doorsets will be manufactured to the highest quality – observing and adhering to the most recent performance and legislative requirements.



Everything is covered with our PAS 24 Security Fire Doorsets

- ✓ PAS 24 Enhanced Security
- ✓ Certifire approved 30 minute fire doors
- ✓ Acoustic rated
- ✓ Smoke control tested
- ✓ Fully assembled flat entrance doorsets
- ✓ Certified ironmongery with optional extras
- ✓ Flexible design and finish options
- ✓ Standard and bespoke sizes
- ✓ Matching interior doorsets



Door Design Options

Choose from a wide range of door designs, a selection of which are shown here:



More design options are available.

If you have an enquiry or would like to find out more about JB Kind's PAS 24 Security and/or Internal Doorset services please visit jbkind.com or contact our Sales team on **01283 554197** or info@jbkind.com.

CHOOSING YOUR DOORS

A guide to choosing your ideal doors



Responsible Suppliers

FSC® Certified chain of custody door supplier

We hold our own FSC® chain of custody certification for certain doors within our collection. Chain of custody certification ensures that the systems within our business allow us to track the door from the day we buy it, through to the day we deliver it.

Wherever you see FSC® Certified within a product description that door has been produced from certified materials and other controlled sources.



Fire Doors

As responsible suppliers of fire resistant doors, we ensure that all of our FD30 doors have been tested in accordance with either the British BS476 pt22 or European EN1634-1:2000 standards.

All of our fire doors have a Fire Test Assessment report which is available upon request and outlines in detail exactly what you can and can't do when fitting any door. All glazed fire doors are fitted with fire-rated glass.

FD30 fire door pairs: please note that not all FD30 fire doors offered within this brochure are certificated for use as pairs. Please contact us for more information.

For more information on fire doors, including details on Glazed Fire Doors & Part M (Mobility) visibility requirements, log on to jbkind.com or call **01283 554197**.



Finding your fire doors

Look out for the 🔥 or 🔵 icons that are adjacent to product codes throughout the brochure.

Certificated Fire Doors

Fire doors certificated by Warringtonfire are identified by 🔵 Certifire FD30 Fire doors. JB Kind's membership of the BWF Fire Door Alliance Scheme supports the promotion of third party certification.



Certifications & Memberships

Our dedication to meeting the highest standards for our customers is illustrated by our continuous achievement of the UK quality standard to the ISO9001 accreditation and our affiliation to the British Woodworking Federation (BWF).



Guarantee

We are proud of the quality of our products and use the best materials, manufacturing processes and control systems to ensure a high quality of workmanship. For more information on our product guarantees, please visit jbkind.com



Things to consider

Finish

Choosing new internal doors involves making a decision on whether they come fully finished or primed/unfinished ready for a top coat of paint or varnish.



Unfinished Finished Primed

Door style

Do you know your flush, from your cottage to your panelled? We recommend choosing your favourite style, as it will help narrow down your search.



Flush Cottage Panelled

Core construction

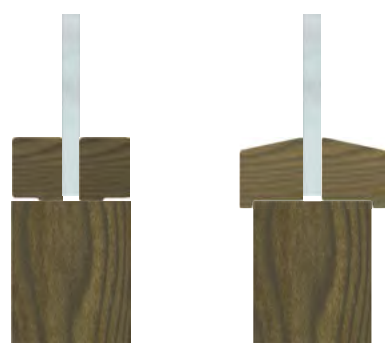
Doors vary in construction and the typical compositions are:
Solid – a solid centre made from wood-based timber components.
Semi-solid – both solid and cellular components
Standard – a cellular, hollow core that is lighter in weight



Solid Semi-solid Standard

Glazing beads

Many glazed doors have beading (mouldings) that surround the glass panes, sometimes these are flush or raised. We confirm the beading types in our product details.



Flush beading Raised beading

How to measure up

To make sure you purchase the right door sizes, take the following measurements.

Door width: measure the top, middle and bottom of the door frame. The widest measurement determines the width of the door.

Door height: measure inside the vertical side of the frame. The longest length determines the height required. Remember to make allowance for any floor covering and fitting tolerances (normally 2-3mm on long edges and top edge).

NB. You can plane door edges slightly to reduce the size. If required, please call us for details of the lipping size.



Door size conversion chart:

A little help if you need to work out the metric and imperial equivalent for door sizes.

Height & Width

Metric (mm)	Imperial (inches)	Imperial (feet & inches)
1981 x 457	78" x 18"	6'6" x 1'6"
1981 x 533	78" x 21"	6'6" x 1'9"
1981 x 610	78" x 24"	6'6" x 2'0"
1981 x 686	78" x 27"	6'6" x 2'3"
1981 x 711	78" x 28"	6'6" x 2'4"
1981 x 762	78" x 30"	6'6" x 2'6"
1981 x 838	78" x 33"	6'6" x 2'9"
1981 x 915	78" x 36"	6'6" x 3'0"
1981 x 1067	78" x 42"	6'6" x 3'6"
1981 x 1168	78" x 46"	6'6" x 3'10"
1981 x 1220	78" x 48"	6'6" x 4'0"
1981 x 1372	78" x 54"	6'6" x 4'6"
1981 x 1524	78" x 60"	6'6" x 5'0"
2032 x 813	80" x 32"	6'8" x 2'8"
2134 x 915	84" x 36"	7'0" x 3'0"
2040 x 526	80 1/4" x 20 1/4"	6'8 1/4" x 1'8 1/4"
2040 x 626	80 1/4" x 24 5/8"	6'8 1/4" x 2'0 5/8"
2040 x 726	80 1/4" x 28 5/8"	6'8 1/4" x 2'4 5/8"
2040 x 826	80 1/4" x 32 1/2"	6'8 1/4" x 2'8 1/2"
2040 x 926	80 1/4" x 36 7/16"	6'8 1/4" x 3'0 7/16"

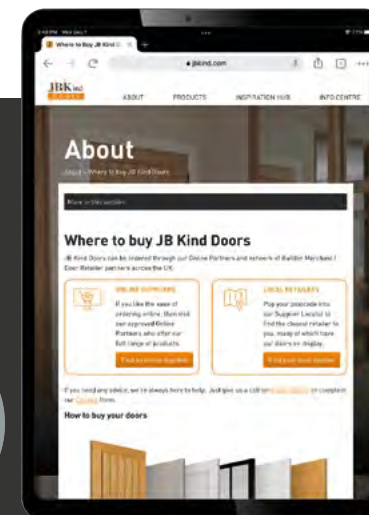
Where to buy

We do not sell doors direct, instead all our doors can be ordered from approved Online Partners and Builders Merchants / Door Retailer partners across the UK.

Visit the Where to Buy section on jbkind.com or contact us for details of your closest retailer.



Find your nearest retailer at jbkind.com/about/where-to-buy



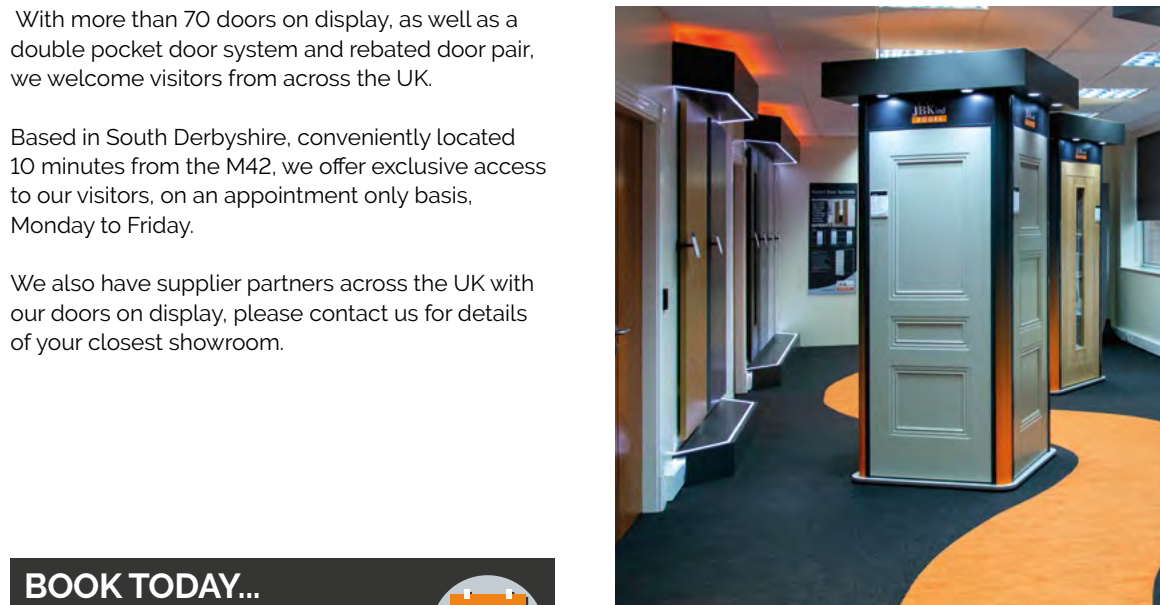
Come and See Our Doors



With more than 70 doors on display, as well as a double pocket door system and rebated door pair, we welcome visitors from across the UK.

Based in South Derbyshire, conveniently located 10 minutes from the M42, we offer exclusive access to our visitors, on an appointment only basis, Monday to Friday.

We also have supplier partners across the UK with our doors on display, please contact us for details of your closest showroom.



BOOK TODAY...

Please call 01283 554197 to make an appointment or complete our online request form.



Or view our Virtual Showroom tour at jbkind.com/about/door-showroom

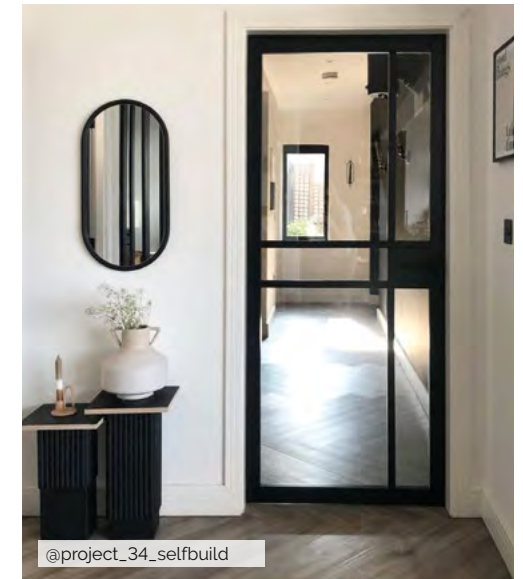
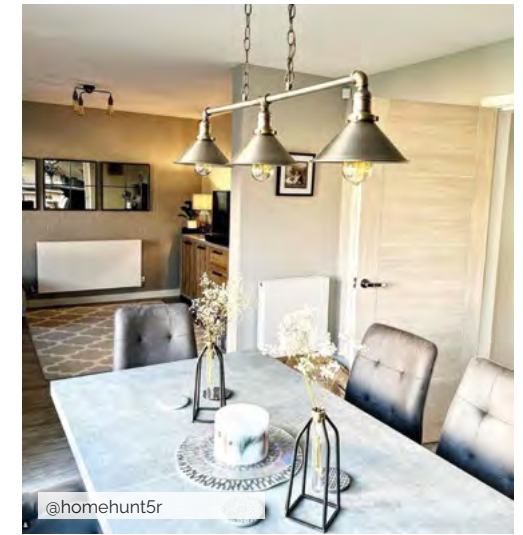
Get Inspired...

Real home inspiration

Follow us on instagram for inspirational homes, self builds and renovation projects, news and much more.



See our doors in #realhomes and don't forget to share photos of your projects by tagging us in at #jbkinddoors.



Brochures, trends and more

Visit jbkind.com to find lots more information to help you make your door choices. Including information on finishes, sizes and the latest interior trends.

Plus, there are product focus brochures, FAQs, how to advice, videos and our bespoke services are all available for you to browse through.



View our brochures at jbkind.com/brochure

Essential Door Care & Maintenance Advice

The principal enemy of timber doors is excess exposure to moisture or dryness. Having left our custody, we have no control over the conditions to which they are subjected and to avoid any subsequent cause for disappointment, we strongly advise the following advice is heeded. If suitable care and treatment is not taken to prevent the free passage of moisture either into or out of the wooden door, stresses within timber may be released resulting in movement or distortions such as swelling, shrinking, warping, splitting, twisting or even discolouration. We are unable to accept any liability for any failings where they have arisen due to the free passage of moisture.

Storage

Upon receipt, check your doors carefully for condition and suitability, as claims made later may not be considered. Please store doors laid flat, fully supported off the floor with at least three full width bearers of the same dimension in a dry fully ventilated area, with protective packaging intact. Doors supplied unfinished should be thoroughly sealed on all faces and edges prior to the commencement of any joinery work, although first sizing them may be to advantage. We recommend that veneered doors are sealed using Manns Extra Tough Interior Varnish or Manns Door oil.

Wood finishes

There are numerous brands on the market and we fear many are formulated to achieve a low market price rather than quality. We have tested Manns Extra Tough Interior Varnish and Manns Door Oil which have produced excellent results. For this reason we strongly recommend the use of one of these two finishes to help protect the guarantee. Either of these two finishes will provide a lasting seal between component parts. Good quality solvent or acrylic finishes may be used, but check they are suitable for use with timber laminates or veneers. Follow the treatment manufacturer's instructions carefully and avoid over applying the treatment, particularly the first coat.

We recommend keeping a copy of the claims made for the product in the event it fails to perform. It is vital all finishing systems are applied equally to both sides and edges at the same time. Rapid changes in ambient moisture are extremely detrimental especially when unbalanced.

Natural oils such as Danish oil, tung oil and linseed oil are not suitable for use with any of our products. These solutions are penetrating oils and are not suitable for use with veneered doors. The application of a base coat stain or paint primer alone is not deemed to form a seal. Failures related to treatment will be assessed based on their application and the claims made by their manufacturer.

Installation

Check the door for suitability prior to commencing work. Claims made later may not be considered. When trimming doors, reduce them equally and not excessively from the top and bottom for height, to the hanging edge only for the width, if minimal, but equally with the meeting edge if a greater amount is necessary.

Recesses for hinges (3 No. 75mm internal, 3 No. 100mm external) and mortises for latch/locks etc. should be cut to the minimum recommended sizes. Panel door rail joints will be significantly weakened if mortises are located there. On completion remove doors, taking off all ironmongery and treat every cut/untreated surface liberally with a number of coats of an appropriate treatment before finally refitting. Remember to pay attention to all edges of your door, particularly any exposed end grain where the propensity for moisture is much greater.

Installation - Fire doors

When fitting our FD30 fire doors, please note that there are strict limitations about how much they can be trimmed and these must not be exceeded. Ironmongery used in the installation of fire doors must be strictly in accordance with the door's certification and appropriate for use with a fire door.

Internal door specific

We strongly advise against the installation of all types of timber doors into a building with recent plastered or screeded areas. Wet sites with enclosed unheated buildings represent extremely detrimental environments and must be thoroughly dry, without condensation, before doors are introduced. Even our Finished doors should not be exposed to inappropriate damp site conditions.

External door specific

Even in times past, it was never advisable or intended that timber entrance doors be fully

exposed to the worst elements of our climate, even if well coated. A South / South Westerly elevation is the worst direction for the prevailing weather and exposure to the hottest sun which can seriously degrade external doors.

We recommend they are set back from the front face of the building or covered by a canopy or porch way projecting not less than about 1.5m, regardless of elevation. Always fit with a suitable weatherboard regardless of frame cill type fitted, to prevent droplets of moisture hanging from the door bottom.

Future maintenance is most important to retain good appearance over many years and we recommend washing down with warm water and detergent every two to three years and re-coating.

Quality standards

All external and internal doors are supplied in accordance with BS EN 942:2007 "Timber in Joinery General Classification of Timber Quality", BS 5278:1976/EN25:1975 "Doors measurement of Dimensions and of Defects of Squareness of Door Leaves" and BS EN 951:1999 "Door leaves. Method for measurement of height, width, thickness and squareness".

Any claims against warranty relating to manufacture will be assessed strictly in accordance with the criteria contained within.

Any claims against warranty relating to storage, handling or installation of any of our doors will be assessed against guidelines contained within BS8000 part 5:1990 and British Standard Code of Practice CP151. JB Kind Terms and Conditions of Trading apply.

Safety Glass

To comply with building regulations all our pre-glazed doors meet the requirements of the British standards.

IMPORTANT

Wood is a natural material and variations in colour and graining should be expected. Note: With door pairs we cannot guarantee an exact veneer match.

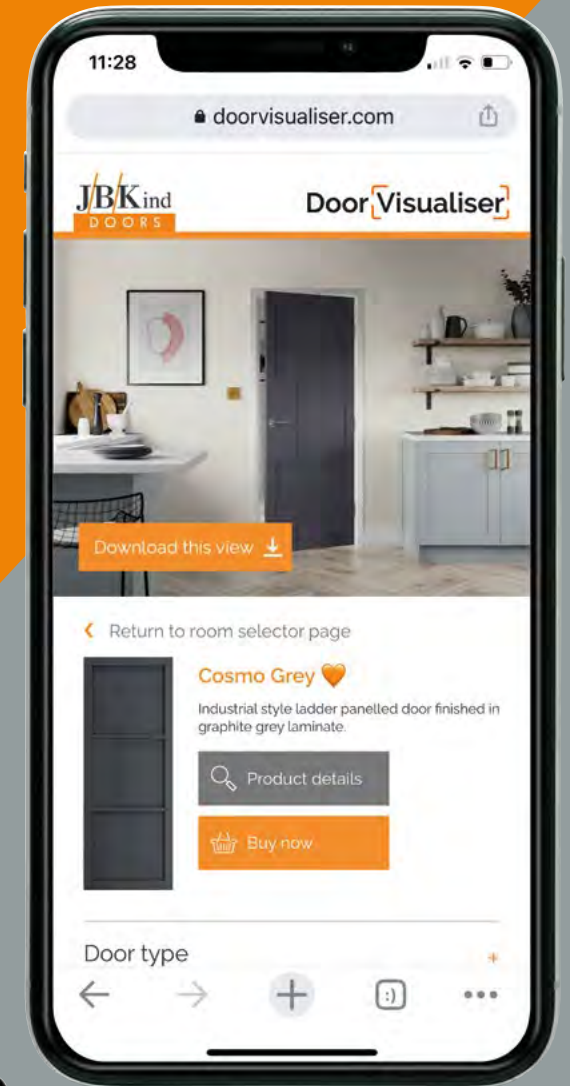
Door Visualiser

Making it easier to choose your doors

The Door Visualiser is the UK's first online door visualisation tool and it's exclusive to JB Kind!

This innovative tool will help you try out more than 70 of our most popular door designs in a choice of room settings. Tweak each room style to suit your own personal taste by changing the wall colours and flooring, then save and share your favourite pictures.

The perfect way to try before you buy!



#chooseyourdoors



Choose a door

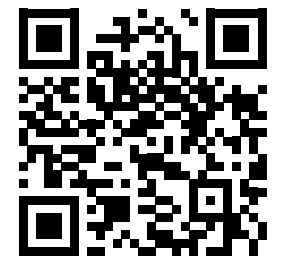
Paint the walls

Change the flooring



or view online at doorvisualiser.com

Scan the QR code and start choosing your new doors



For a perfect finish...

Applying a quality finish to your internal doors ensures their long term appearance and performance.

We recommend the following finishing products that have been tested on our unfinished oak internal doors with excellent results.

Please refer to www.wood-finishes-direct.com for more information and to purchase these products directly.

All-in-one solvent based, hard wax oil that dries to a natural, clear matt finish.



Clear, water based acrylic varnish that is ideal for wooden doors.



J/B/K^{ind} DOORS

Follow our doors



JB Kind Limited
Portal Place, Astron Business Park,
Hearthcote Road, Swadlincote,
Derbyshire DE11 9DW
T: 01283 554197
E: info@jbkind.com

www.jbkind.com